

CITY OF STOCKTON GENERAL NOTES

- ALL IMPROVEMENTS SHALL BE CONSTRUCTED IN STRICT ACCORDANCE WITH THE FOLLOWING: CURRENT CITY OF STOCKTON STANDARD SPECIFICATIONS AND PLANS, INCLUSIVE OF ALL CURRENT REVISIONS AND AMENDMENTS, CALIFORNIA DEPARTMENT OF TRANSPORTATION CURRENT STANDARD PLANS AND SPECIFICATIONS (CALTRANS), INCLUSIVE OF ALL CURRENT REVISIONS AND AMENDMENTS, AND CA-MUTCD LATEST EDITION, INCLUSIVE OF ALL CURRENT REVISIONS AND AMENDMENTS THERETO. WHERE THERE IS A CONFLICT BETWEEN THE PLANS AND THE CITY'S STANDARD SPECIFICATIONS AND PLANS, THE CITY OF STOCKTON STANDARD SPECIFICATIONS AND PLANS SHALL PREVAIL. CONTRACTOR SHALL BE RESPONSIBLE FOR CONSTRUCTING THE IMPROVEMENTS IN ACCORDANCE WITH THE ABOVE-MENTIONED STANDARDS AND SPECIFICATIONS.
- THE CONTRACTOR SHALL VISIT THE SITE AND BECOME FAMILIAR WITH THE COMPLETE WORK SCOPE AND ALL RELATED CONDITIONS PRIOR TO BID. ANY QUESTIONS OR DISCREPANCIES WITH THE INFORMATION SHOWN HEREIN MUST BE DIRECTED TO THE ENGINEER PRIOR TO BID.
- THE CONTRACTOR SHALL BE RESPONSIBLE FOR ALL PERMITS AND LICENSES REQUIRED FOR THE CONSTRUCTIONS AND COMPLETION OF THE PROJECT AND SHALL PERFORM ALL WORK IN ACCORDANCE WITH THE REQUIREMENTS AND CONDITIONS OF ALL PERMITS AND APPROVALS APPLICABLE TO THIS PROJECT. THE CONTRACTOR SHALL ENSURE THAT THE NECESSARY PERMITS AND/OR LICENSES ARE SECURED PRIOR TO CONSTRUCTION.
- CONTRACTOR SHALL OBTAIN AN ENCROACHMENT PERMIT FROM THE CITY OF STOCKTON FOR ANY WORK DONE WITHIN CITY RIGHTS-OF-WAY OR ON CITY-OWNED FACILITIES WITHIN AN EASEMENT. CONTRACTOR SHALL CALL THE PERMIT CENTER AT (209) 937-5386 TO REQUEST A CONTROL NUMBER AND ACTIVATE THE PERMIT NO LESS THAN 24 HOURS, BUT NOT IN EXCESS OF 72 HOURS PRIOR TO START OF WORK.
- ALL STATIONS REFER TO DISTANCES ALONG STREET CENTERLINE. UNLESS OTHERWISE NOTED, ALL STATIONS OFF CENTERLINE ARE PERPENDICULAR TO OR RADIALLY OPPOSITE CENTERLINE STATIONS.
- THE CONTRACTOR SHALL RECEIVE PRIOR APPROVAL FROM THE ENGINEER FOR ANY EXTRA WORK. THE CONTRACTOR SHALL BE HELD RESPONSIBLE FOR ANY FIELD CHANGES MADE WITHOUT PRIOR WRITTEN AUTHORIZATION FROM THE ENGINEER AT NO ADDITIONAL COST TO THE CITY.
- THE CONTRACTOR SHALL BE RESPONSIBLE FOR PROTECTING FROM DAMAGE ALL EXISTING AND NEWLY PLACED IMPROVEMENTS THAT ARE TO REMAIN. SUCH IMPROVEMENTS THAT ARE DAMAGED BY THE CONTRACTOR SHALL BE REPLACED AT NO ADDITIONAL COST TO THE CITY.
- THE CONTRACTOR AGREES THAT HE SHALL ASSUME SOLE AND COMPLETE RESPONSIBILITY FOR JOB SITE CONDITIONS DURING THE COURSE OF CONSTRUCTION OF THIS PROJECT INCLUDING SAFETY AND SECURITY OF JOB SITE, THAT THIS REQUIREMENT SHALL APPLY CONTINUOUSLY AND NOT BE LIMITED TO NORMAL WORKING HOURS.
- THE CONTRACTOR SHALL MAINTAIN A NEATLY MARKED SET OF FULL-SIZE AS-BUILT DRAWINGS SHOWING THE FINAL LOCATION OF FINAL IMPROVEMENTS. AS-BUILT DRAWINGS SHALL REFLECT CHANGE ORDERS, ACCOMMODATIONS, AND ADJUSTMENTS TO ALL IMPROVEMENTS CONSTRUCTED. WHERE NECESSARY, SUPPLEMENTAL DRAWINGS SHALL BE PREPARED AND SUBMITTED BY THE CONTRACTOR.
- PRIOR TO ACCEPTANCE OF THE PROJECT, THE CONTRACTOR SHALL DELIVER TO THE ENGINEER, ONE SET OF NEATLY MARKED AS-BUILT DRAWINGS. AS-BUILT DRAWINGS SHALL BE REVIEWED AND THE COMPLETE AS-BUILT DRAWING SET SHALL BE CURRENT WITH ALL CHANGES AND DEVIATIONS REDLINED AS A PRECONDITION TO THE FINAL PROGRESS PAYMENT APPROVAL AND/OR FINAL ACCEPTANCE.
- THE CONTRACTOR SHALL PROVIDE ALL SHORING, BRACING, SLOPING OR OTHER PROVISIONS NECESSARY TO PROTECT WORKERS FOR ALL AREAS TO BE EXCAVATED TO A DEPTH OF 5' OR MORE. EXCAVATIONS OF 5 FEET OR MORE IN DEPTH WILL REQUIRE AN EXCAVATIONS PERMIT FROM THE STATE OF CALIFORNIA DEPARTMENT OF INDUSTRIAL SAFETY FOR TRENCHES 5 FEET OR MORE IN DEPTH. THE CONTRACTOR SHALL COMPLY WITH SECTION 7-1.02K(9)(b) OF THE CALTRANS STANDARDS, SECTION 6705 OF THE STATE OF CALIFORNIA LABOR CODE, AND ANY LOCAL CODES OR ORDINANCES.
- ATTENTION IS CALLED TO: SECTION 1541(b)(1) OF THE CONSTRUCTION SAFETY ORDERS (CALIFORNIA CODE OF REGULATIONS, TITLE 8), ISSUED BY THE OCCUPATIONAL SAFETY AND HEALTH STANDARDS BOARD PURSUANT TO THE CALIFORNIA OCCUPATIONAL SAFETY AND HEALTH ACT OF 1973, WHICH STATES: "THE APPROXIMATE LOCATION OF SUBSURFACE INSTALLATIONS, SUCH AS SEWER, TELEPHONE, FUEL, ELECTRIC, WATER LINES, OR ANY OTHER SUBSURFACE INSTALLATIONS THAT REASONABLY MAY BE EXPECTED TO BE ENCOUNTERED DURING EXCAVATION WORK, SHALL BE DETERMINED BY THE EXCAVATOR PRIOR TO OPENING AN EXCAVATION."
- PRIOR TO COMMENCING ANY WORK, IT SHALL BE THE CONTRACTOR'S RESPONSIBILITY TO HAVE EACH UTILITY COMPANY LOCATE IN THE FIELD THEIR MAIN AND SERVICE LINES. THE CONTRACTOR SHALL NOTIFY MEMBERS OF THE UNDERGROUND SERVICE ALERT (U.S.A.) 48 HOURS IN ADVANCE OF PERFORMING EXCAVATION WORK BY CALLING THE TOLL-FREE NUMBER (800) 227-2600.
- IT SHALL BE CONTRACTOR'S SOLE RESPONSIBILITY TO PROTECT ALL EXISTING UTILITIES SO THAT NO DAMAGE RESULTS TO THEM DURING THE PERFORMANCE OF HIS CONTRACT. THE CONTRACTOR SHALL BE REQUIRED TO COOPERATE WITH OTHER CONTRACTORS AND UTILITY COMPANIES INSTALLING NEW OR MODIFIED STRUCTURES, UTILITIES AND SERVICES WITHIN THE PROJECT LIMITS.
- THE CONTRACTOR SHALL EXERCISE DUE CAUTION AND SHALL CAREFULLY PRESERVE BENCH MARKS, CONTROL POINTS, REFERENCE POINTS AND ALL SURVEY MONUMENTS, AND SHALL BEAR ALL EXPENSES FOR REPLACEMENT AND/OR ERROR CAUSED BY HIS UNNECESSARY LOSS OR DISTURBANCE. THE CONTRACTOR SHALL CONSULT WITH A LICENSED LAND SURVEYOR OR CIVIL ENGINEER LICENSED TO PRACTICE LAND SURVEYING IN CALIFORNIA PRIOR TO BEGINNING CONSTRUCTION TO ENSURE THAT ANY PRECONSTRUCTION CORNER RECORDS, AS REQUIRED BY THE STATE OF CALIFORNIA PROFESSIONAL LAND SURVEYOR ACT HAVE BEEN FILED WITH THE COUNTY SURVEYOR, PURSUANT TO SECTION 8771(a-4) OF THE CALIFORNIA BUSINESS AND PROFESSION CODE.
- ALL WORK IN THE PUBLIC RIGHT-OF-WAY IS SUBJECT TO THE APPROVAL AND ACCEPTANCE OF THE ENGINEER.
- THE CONTRACTOR SHALL LAYOUT IMPROVEMENTS FROM THE DIMENSIONS SHOWN ON THE PLANS. ANY CLARIFICATION OR CONFLICTS, DISCREPANCIES OR AMBIGUITIES SHALL BE DIRECTED TO THE ENGINEER PRIOR TO THE CONSTRUCTION OF THE IMPROVEMENTS.
- DUST CONTROL SHALL BE PERFORMED AT ALL TIMES, AT THE CONTRACTORS' EXPENSE, TO MINIMIZE ANY DUST NUISANCE AND SHALL BE IN ACCORDANCE WITH SECTION 10-5 OF CALTRANS STANDARD SPECIFICATIONS AND THE REQUIREMENTS OF THE CITY OF STOCKTON.
- THE CONTRACTOR SHALL MAINTAIN ALL EXISTING WATER, SEWER, AND DRAINAGE FACILITIES WITHIN THE CONSTRUCTION AREA UNTIL NEW IMPROVEMENTS ARE IN PLACE AND FUNCTIONING, EXCEPT WHERE OTHERWISE APPROVED.
- INGRESS AND EGRESS BY PROPERTY OWNERS, BUSINESSES, AND OTHERS SHALL BE PROVIDED AT ALL TIMES DURING THE COURSE OF CONSTRUCTION UNLESS OTHERWISE APPROVED OR SPECIFIED.

GRADING NOTES

- GRADING AND LAND STABILIZATION SHALL INCLUDE EXCAVATION AND FILL OF ROADS IN ACCORDANCE WITH THE SPECIFICATIONS OF THE GEOTECHNICAL ENGINEER AND UNDER THE DIRECTION, SUPERVISION, MONITORING, TESTING AND APPROVAL OF THE OWNER AND GEOTECHNICAL ENGINEER.
- GRADING AND LAND STABILIZATION SHALL INCLUDE COST OF DEWATERING; REMOVING FROM THE SITE ALL STRIPPED VEGETATION, DEBRIS, AND OTHER DELETERIOUS MATERIALS.
- STOCKPILES OF EXISTING DELETERIOUS MATERIAL SHALL BE DISPOSED OF UNDER THE DIRECTION AND SUPERVISION OF THE OWNER.
- ALL IMPORTED FILL SHALL BE APPROVED BY THE GEOTECHNICAL ENGINEER.
- TOPOGRAPHICAL INFORMATION SHOWN REFLECTS A TOPOGRAPHY SURVEY PERFORMED BY SIEGFRIED ENGINEERING.
- ANY AND ALL SEDIMENT AND/OR EROSION CONTROL DETAILS CONTAINED WITHIN THESE PLANS ARE TO BE CONSIDERED AS "REFERENCE DETAILS" ONLY AND THE CITY'S APPROVAL OF THESE PLANS AND "REFERENCE DETAILS" DOES NOT RELIEVE THE OWNER/DEVELOPER FROM COMPLIANCE WITH THE STORM WATER POLLUTION PREVENTION PLAN AS APPROVED BY THE CITY'S STORM WATER DIVISION. THIS PROJECT DISTURBS LESS THAN ONE ACRE, THUS A STORM WATER POLLUTION PREVENTION PLAN OR EROSION WAIVER IS NOT REQUIRED.

LEGEND

EXISTING	PROPOSED

ABBREVIATIONS

ABBREVIATION	DESCRIPTION
AB	AGGREGATE BASE
AC	ASPHALT CONCRETE
BC	BEGINNING OF CURB
CL	CENTERLINE
C.O.S.	CITY OF STOCKTON
DIA	DIAMETER
DWG	DRAWING
EC	END OF CURB
EL	ELEVATION
EP	EDGE OF PAVEMENT, EXISTING PAVEMENT
ESMT	EASEMENT
EX	EXISTING
FDR-C	FULL DEPTH RECLAMATION WITH CEMENT
FGCL	FINISH GRADE AT CENTERLINE
FL	FLOWLINE
FT.	FEET
G	GROUND
GB	GRADE BREAK
HMA	HOT MIX ASPHALT
IN.	INCH
MAX	MAXIMUM
MH	MAINTENANCE HOLE
MIN	MINIMUM
MUD	MUNICIPAL UTILITIES DEPARTMENT
NO.	NUMBER
NTS	NOT TO SCALE
P	PAVEMENT
PL	PROPERTY LINE
PRC	PHASE RESPONSE CURVE
PT	POINT
R	RADIAL OR RADIUS
RWCF	REGIONAL WASTEWATER CONTROL FACILITY
SHT	SHEET
STA	STATION
STD	STANDARD
THRU	THROUGH
TI	TRAFFIC INDEX
TYP	TYPICAL
UNO	UNLESS NOTED OTHERWISE
W	WATER
(W)	WEST
(E)	EAST
(S)	SOUTH
(N)	NORTH
±	PLUS OR MINUS

GEOTECHNICAL NOTES

A GEOTECHNICAL MEMORANDUM HAS BEEN PREPARED FOR THIS PROJECT:
 RC OXIDATION PONDS #2 AND #3 INTERIOR ROADS REPAIR NO. P22002
 STOCKTON, CALIFORNIA
 GEOTECHNICAL INVESTIGATION
 DATED FEBRUARY 23, 2023
 PREPARED BY:
 SIEGFRIED
 3428 BROOKSIDE ROAD
 STOCKTON, CA 95219
 209-943-2021
 THE CONTRACTOR SHALL REVIEW THIS MEMORANDUM AND INCORPORATE THE RECOMMENDATIONS PROVIDED.

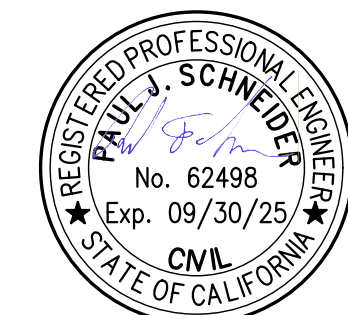
STORM WATER POLLUTION PREVENTION

THE AREA OF DISTURBED SOIL WILL BE MORE THAN ONE ACRE IN SIZE, THEREFORE THE PROJECT WILL BE REQUIRED TO OBTAIN COVERAGE UNDER THE STATE'S CONSTRUCTION GENERAL PERMIT FOR STORM WATER DISCHARGE, ORDER 2022-0057-DWQ. THE CONTRACTOR SHALL BE REQUIRED TO OBTAIN THE SERVICES OF A QUALIFIED SWPPP DEVELOPER (QSD) AND HAVE THEM PREPARE A STORM WATER POLLUTION PREVENTION PLAN (SWPPP) AND ASSOCIATED PERMIT REGISTRATION DOCUMENTS REQUIRED TO APPLY FOR COVERAGE AND PROVIDE INSPECTIONS. THE CONTRACTOR SHALL ALSO BE REQUIRED TO OBTAIN THE SERVICES OF A QUALIFIED SWPPP PRACTITIONER (QSP) TO IMPLEMENT THE PLANS IN THE SWPPP AND PROVIDE INSPECTIONS. THE CONTRACTOR SHALL COORDINATE WITH THE MUNICIPAL UTILITIES DEPARTMENT WHEN FILING PERMIT REGISTRATION DOCUMENTS.

SURVEY MONUMENT PRESERVATION:

- PRIOR TO CONSTRUCTION, CONTRACTOR SHALL ENGAGE A LICENSED SURVEYOR TO PERFORM A PRE-CONSTRUCTION MONUMENT PRESERVATION SURVEY IN ACCORDANCE WITH SECTIONS 8771(B) OF THE BUSINESS AND PROFESSIONS CODE OF THE STATE OF CALIFORNIA. LOCATIONS OF EXISTING MONUMENTATION KNOWN TO THE ENGINEER THAT ARE WITHIN THE AREA OF PROJECT HAVE BEEN INDICATED ON THE PLANS FOR REFERENCE. AT THE COMPLETION OF CONSTRUCTION, BUT PRIOR TO FINAL APPROVAL OF THE IMPROVEMENTS, CONTRACTOR'S LICENSED SURVEYOR SHALL PERFORM A POST-CONSTRUCTION MONUMENT PRESERVATION SURVEY IN ACCORDANCE WITH SECTIONS 8771(C) AND 8771(D), AND, IF NECESSARY, FILE A RECORD OF SURVEY OR CORNER RECORD(S) IN ACCORDANCE WITH SECTION 8771(F).

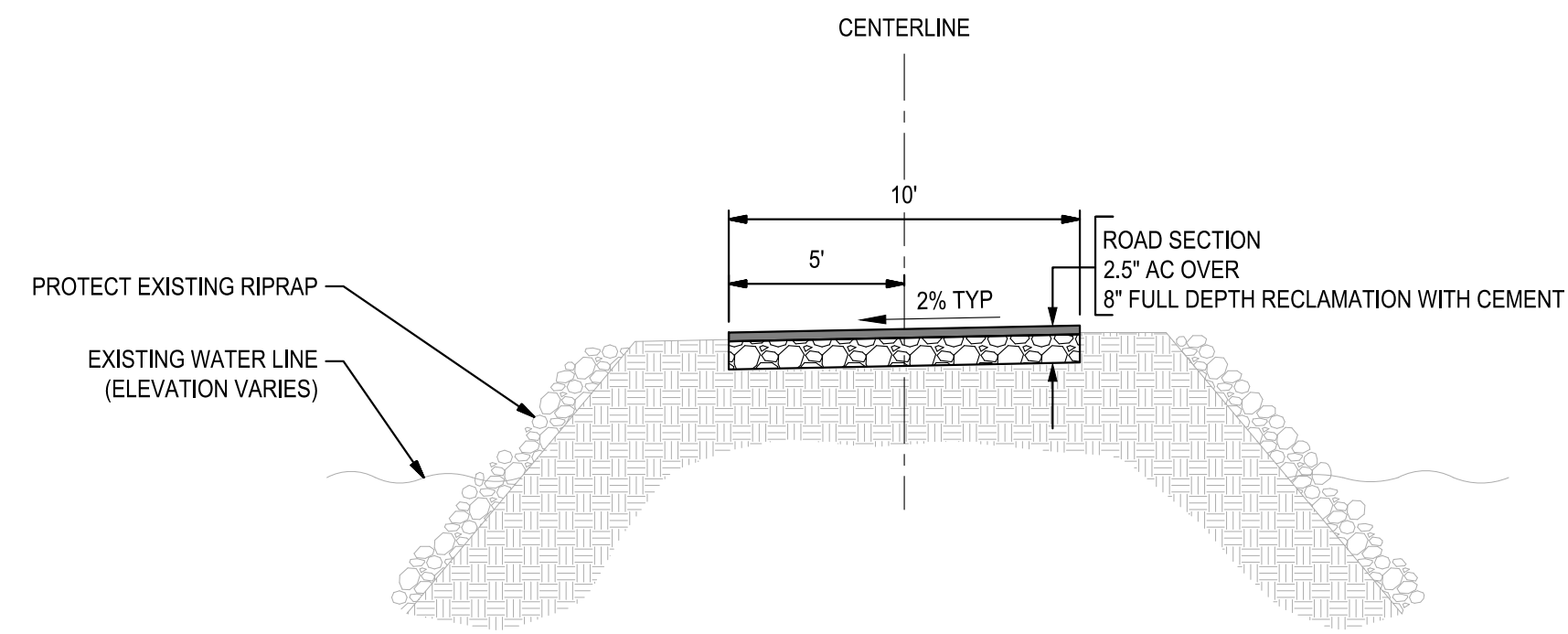
SPECIAL FLOOD HAZARD AREA (SFHA): ZONE AE



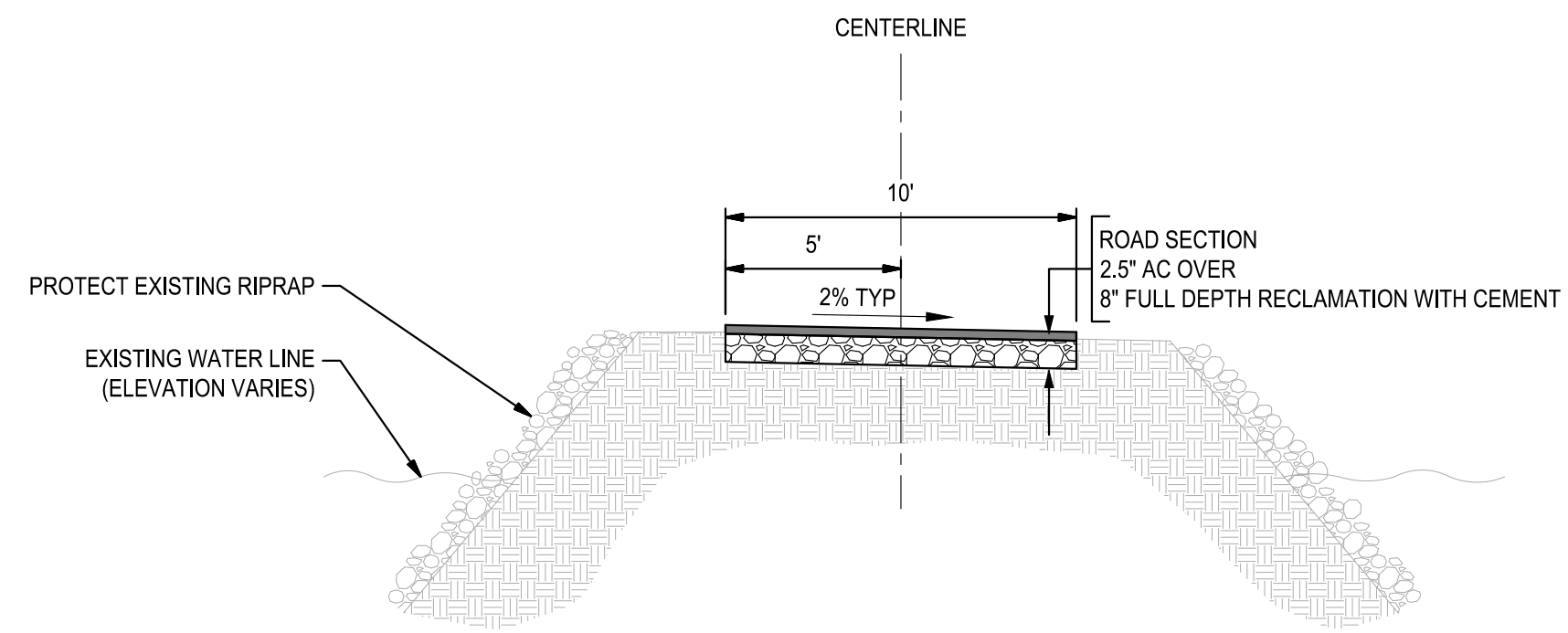
DATE SIGNED: 12/06/23



 CIVIL, STRUCTURAL, LANDSCAPE ARCHITECTURE, SURVEYING, PLANNING, ATHLETIC FACILITY DESIGN, GEOTECHNICAL		RWCF OXIDATION POND #2 AND #3 INTERIOR LEVEE ROADS REPAIR	
Revision No. Description Date By Appr'd. By		GENERAL NOTES, LEGEND, & ABBREVIATIONS	
SCALE AS SHOWN		APPROVED BY: 1/29/24 DATE	
DESIGNED BY PJS		SHEET NO. C1.1	
DRAWN BY MWK		P22002	
CHECKED BY PJS		DEPUTY MUD DIRECTOR STOCKTON, CALIFORNIA	
RECORD DWGS.		PROJECT NO.	



1 NORTH LEVEE ROAD TYPICAL SECTION
NTS

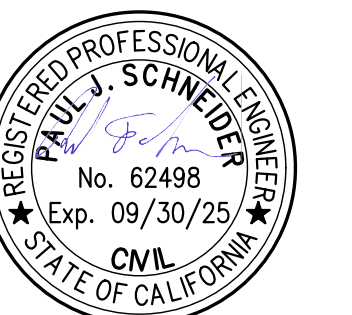


2 SOUTH LEVEE ROAD TYPICAL SECTION
NTS

F:\2\Projects\21158_City of Stockton RWCF Oxidation Pond Repair\Drawings and Graphics\Improvement Plans\21158-C1-2-RWCF-SECTION2 PLAN.dwg --- 12/06/23

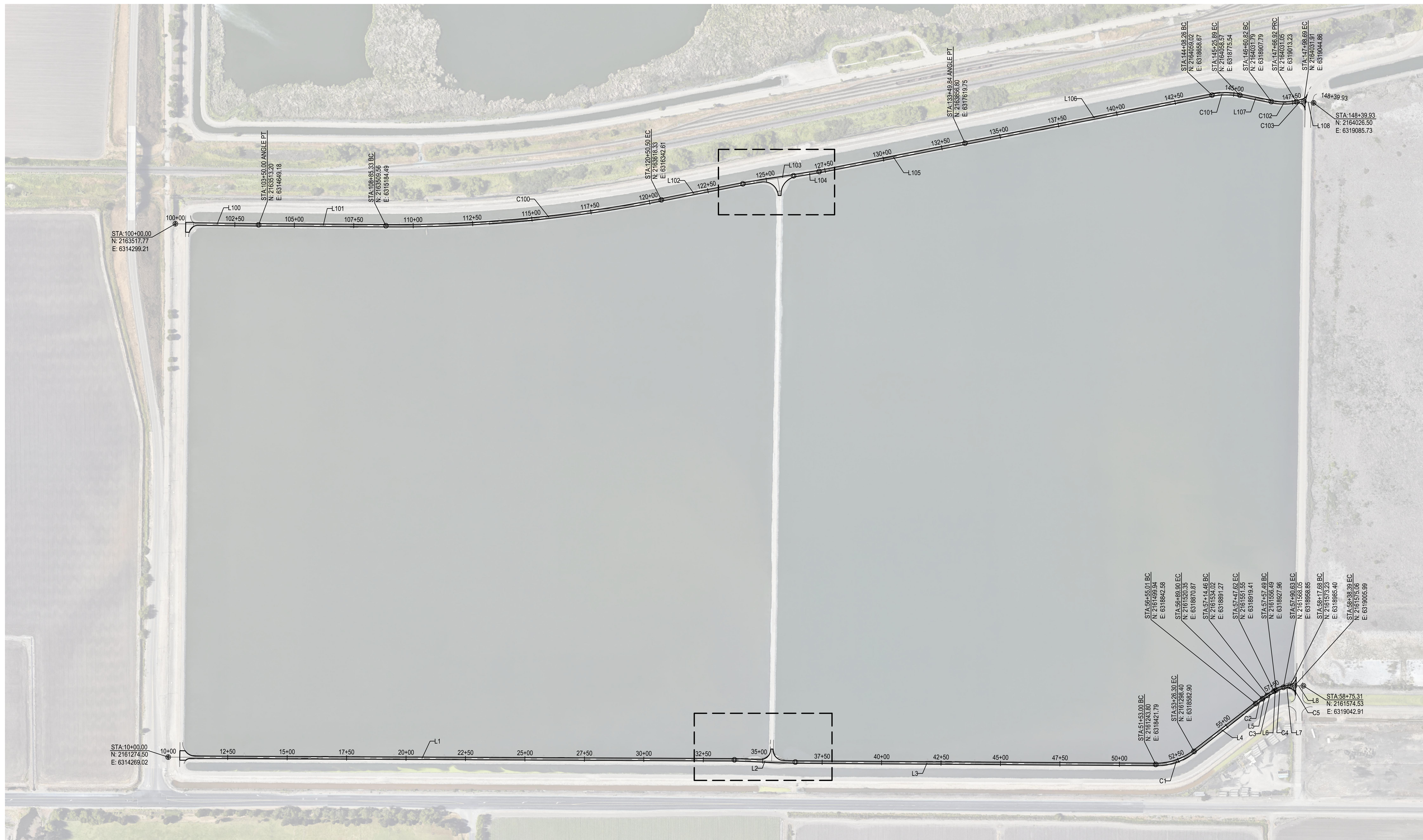


Know what's below.
Call before you dig.



DATE SIGNED: 12/06/23

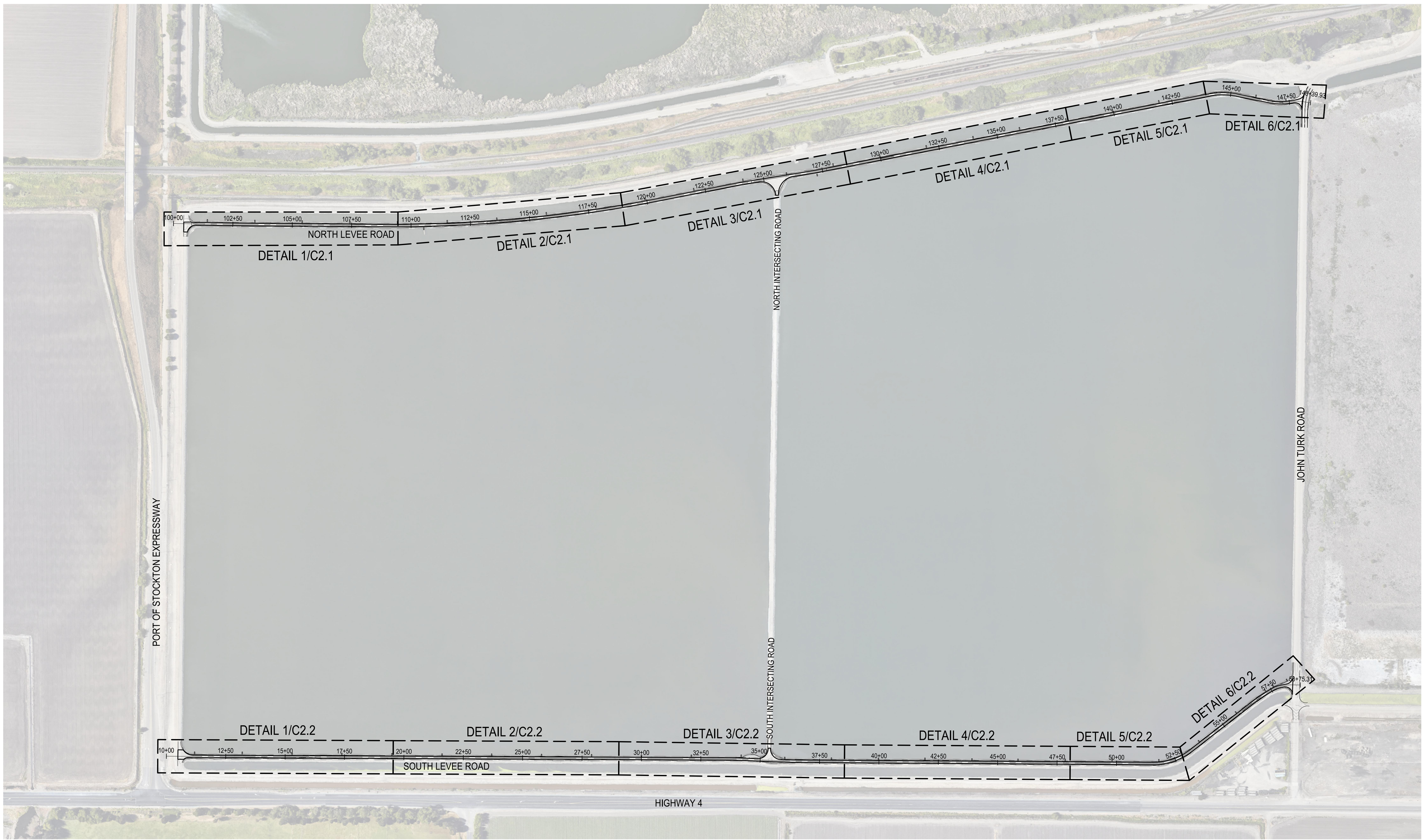
<p> <ul style="list-style-type: none"> ■ CIVIL ■ STRUCTURAL ■ LANDSCAPE ■ ARCHITECTURE ■ SURVEYING ■ PLANNING ■ ATHLETIC FACILITY DESIGN ■ GEOTECHNICAL </p> <p> 8428 Brookside Road, Stockton, California 95219 209-943-2021 www.stegfriedeng.com Fax: 209-942-0214 </p>					RWCF OXIDATION POND #2 AND #3 INTERIOR LEVEE ROADS REPAIR		
TYPICAL CROSS-SECTIONS							
MUNICIPAL UTILITIES DEPARTMENT CITY OF STOCKTON, CALIFORNIA							
Revision No.	Description	Date	By	Appr'd. By	SCALE AS SHOWN	APPROVED BY: DATE	SHEET NO.
					DESIGNED BY PJS	 DEPUTY MUD DIRECTOR STOCKTON, CALIFORNIA	C1.2
					DRAWN BY MWK		P22002
					CHECKED BY PJS		PROJECT NO.
					RECORD DWGS.		



CENTERLINE CURVE TABLE			
CURVE	RADIUS		
C100	5800.00'		
C101	300.00'		
C102	275.00'		
C103	100.00'		
C104	2		

CENTERLINE LINE TABLE			
LINE	LENGTH	DIRECTION	
L1	2381.25'	S89° 43' 38"E	
L2	256.11'	S87° 53' 03"E	
L3	1515.64'	S89° 37' 32"E	
L4	328.71'	N52° 11' 02"E	
L5	24.56'	N56° 10' 56"E	
L6	9.87'	N59° 58' 57"E	
L7	27.05'	N78° 58' 11"E	
L8	36.93'	S89° 10' 02"E	
L9	15.44'	N2° 06' 57"E	
L10	24.34'	N0° 49' 05"E	

CENTERLINE CURVE TABLE					
CURVE	RADIUS	DELTA	LENGTH		
C1	260.00'	Δ=38°11'26"	173.30'		
C2	500.00'	Δ=3°59'54"	34.89'		
C3	500.00'	Δ=3°48'01"	33.16'		
C4	100.00'	Δ=18°59'13"	33.14'		
C5	100.00'	Δ=11°51'48"	20.71'		
C6	500.00'	Δ=1°17'53"	11.33'		

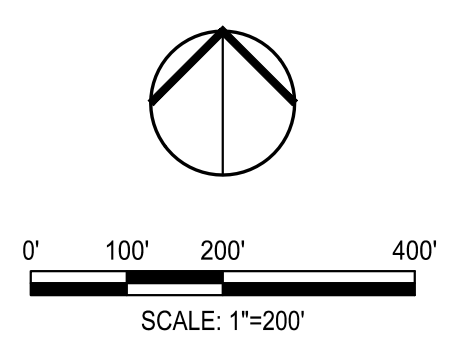


1 OVERALL TOPOGRAPHIC & DEMOLITION PLAN
1" = 200'

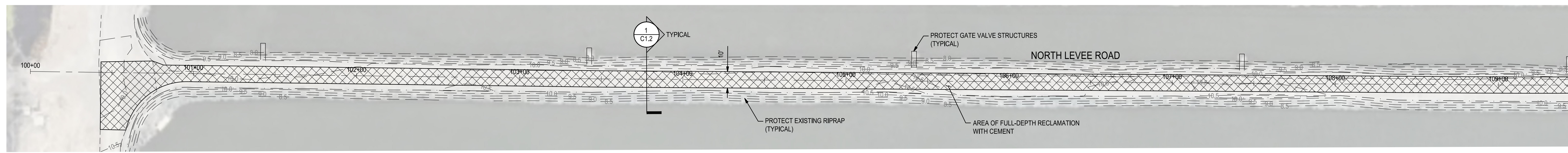


DATE SIGNED: 12/06/23

F:\2\Projects\212158 - City of Stockton RWCF Oxidation Ponds Repair\Drawings and Graphics\Improvement Plans\212158-C2.0-Overall\DWG_0200_Plan.dwg - 12/06/23

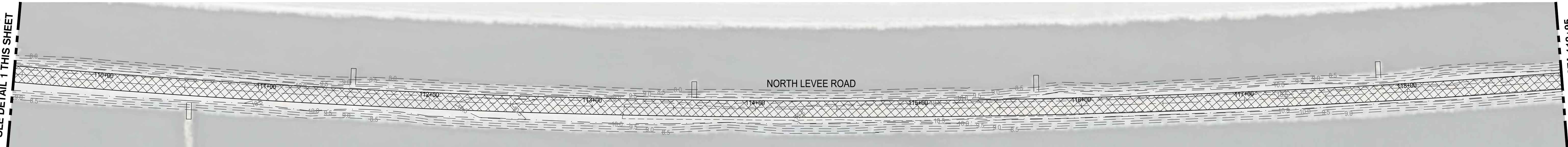


		<ul style="list-style-type: none"> ■ CIVIL ■ STRUCTURAL ■ LANDSCAPE ■ ARCHITECTURE ■ SURVEYING ■ PLANNING ■ ATHLETIC FACILITY DESIGN ■ GEOTECHNICAL 		RWCF OXIDATION POND #2 AND #3 INTERIOR LEVEE ROADS REPAIR	
		OVERALL TOPOGRAPHIC & DEMOLITION PLAN		MUNICIPAL UTILITIES DEPARTMENT CITY OF STOCKTON, CALIFORNIA	
Revision No.	Description	Date	By	Appr'd. By	SCALE AS SHOWN
					APPROVED BY: 1/29/24 DATE
					DESIGNED BY PJS
					DRAWN BY MWK
					CHECKED BY PJS
					RECORD DWGS.
DEPUTY MUD DIRECTOR STOCKTON, CALIFORNIA					SHEET NO. C2.0
PROJECT NO. P22002					PROJECT NO.



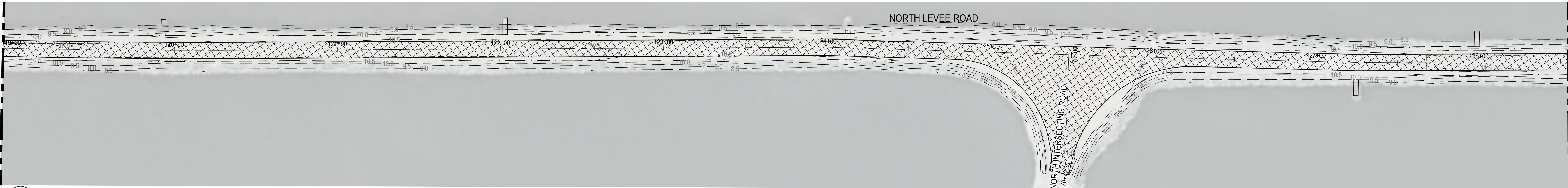
1 NORTH LEVEE ROAD
1" = 30'

MATCHLINE STA 109+45
SEE DETAIL 2 THIS SHEET



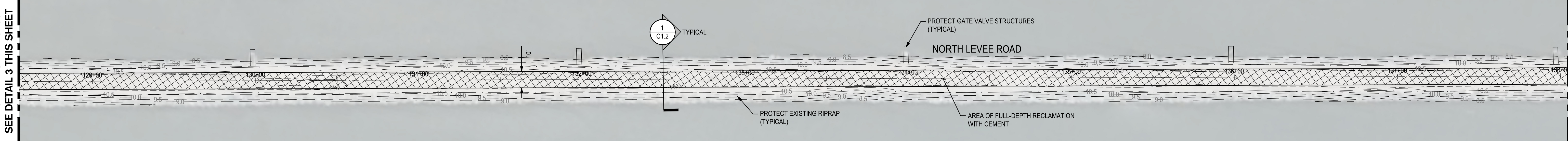
2 NORTH LEVEE ROAD
1" = 30'

MATCHLINE STA 118+95
SEE DETAIL 3 THIS SHEET



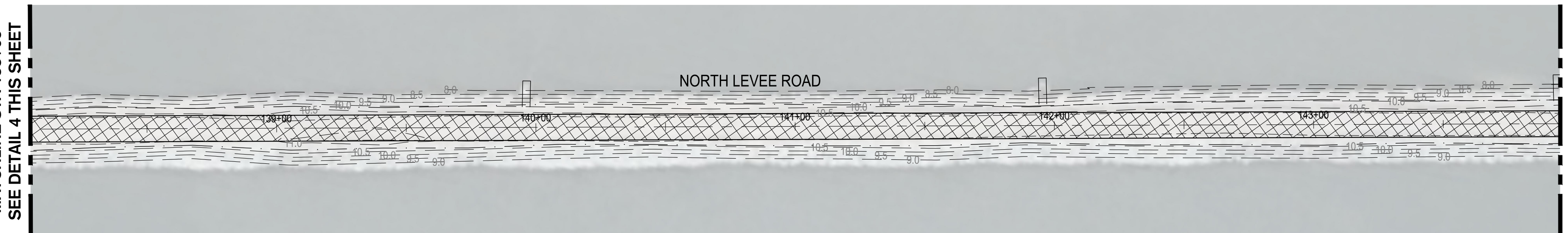
3 NORTH LEVEE ROAD
1" = 30'

MATCHLINE STA 128+55
SEE DETAIL 4 THIS SHEET



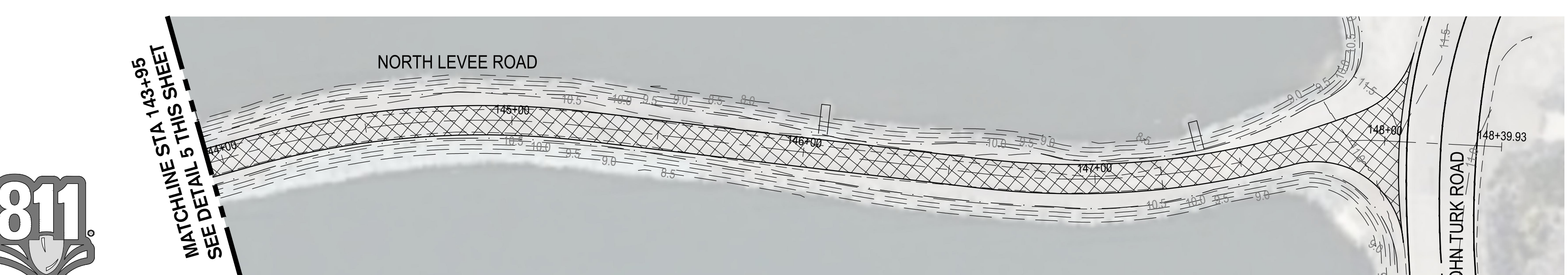
4 NORTH LEVEE ROAD
1" = 30'

MATCHLINE STA 138+05
SEE DETAIL 5 THIS SHEET



5 NORTH LEVEE ROAD
1" = 30'

MATCHLINE STA 143+95
SEE DETAIL 6 THIS SHEET



6 NORTH LEVEE ROAD
1" = 30'

LEGEND

FULL DEPTH RECLAMATION WITH CEMENT (FDR-C)
DEPTH OF FDR IS 8 INCHES

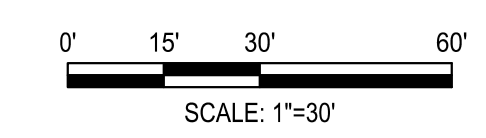
NOTE: SEE SHEET C2.0 FOR KEYMAP. SEE PLAN AND PROFILE SHEETS FOR HORIZONTAL GEOMETRY OF FDR AND NEW PAVEMENT SURFACE AREAS.



DATE SIGNED: 12/06/23



Know what's below.
Call before you dig.



SIEGFRIED
4428 Brookside Road, Stockton, California 95219
209-943-2021 www.siegfriedeng.com Fax: 209-942-0214

- CIVIL
- STRUCTURAL
- LANDSCAPE
- ARCHITECTURE
- SURVEYING
- PLANNING
- ATHLETIC FACILITY DESIGN
- GEOTECHNICAL

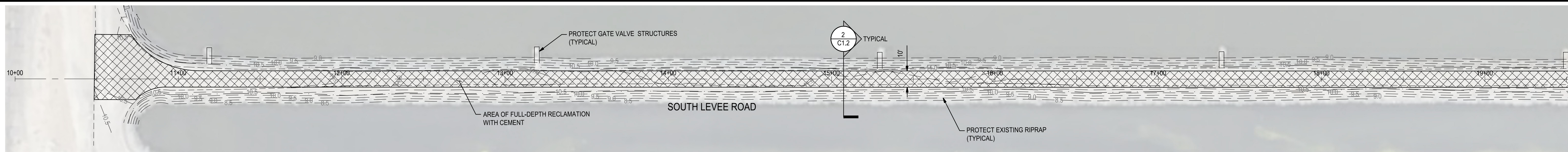
**RWCF OXIDATION POND #2 AND #3
INTERIOR LEVEE ROADS REPAIR**

**TOPOGRAPHIC & DEMOLITION
PLAN**

Revision No.	Description	Date	By	Apprd. By

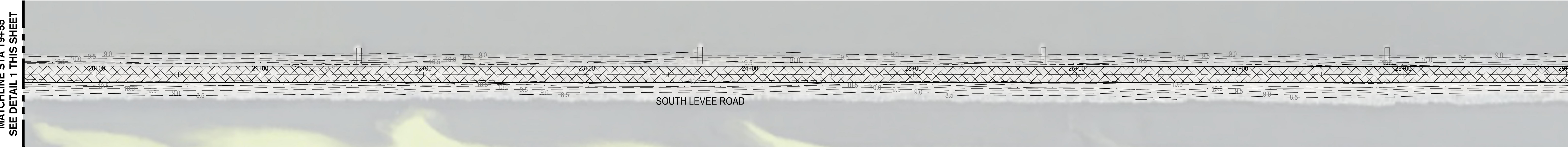
SCALE AS SHOWN	APPROVED BY: 1/29/24	SHEET NO.
DESIGNED BY: PJS	DATE	C2.1
DRAWN BY: MWK	<i>Paul J. Schneider</i>	P22002
CHECKED BY: PJS	DEPUTY MUO DIRECTOR	PROJECT NO.
RECORD DWGS.	STOCKTON, CALIFORNIA	

F:\2\Projects\212158_City of Stockton RWCF Oxidation Ponds Road Repair\Draws and Graphics\Improvement Plans\212158-C2.1-Topo_0040_NORTH LEVEE PLAN.dwg --- 12/06/23



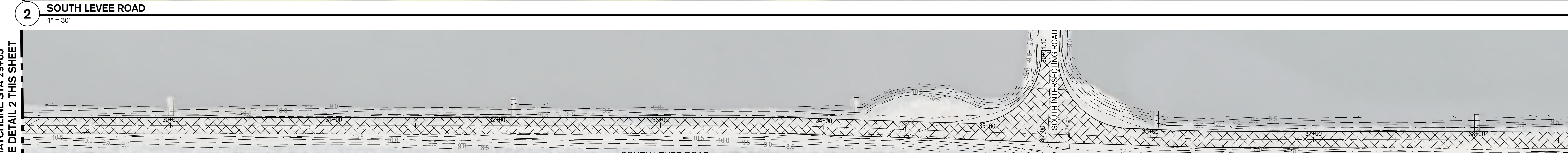
1 SOUTH LEVEE ROAD
1" = 30'

MATCHLINE STA 19+55
SEE DETAIL 2 THIS SHEET



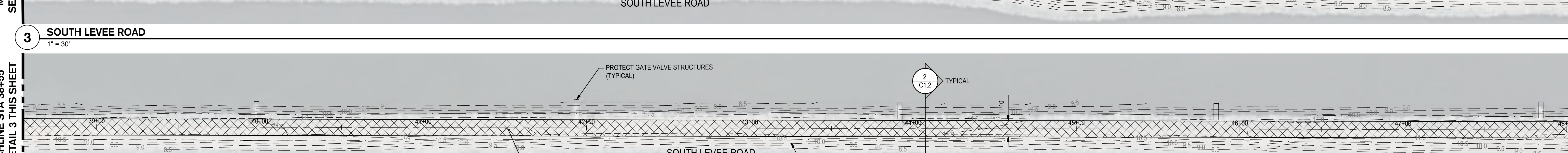
2 SOUTH LEVEE ROAD
1" = 30'

MATCHLINE STA 29+05
SEE DETAIL 3 THIS SHEET



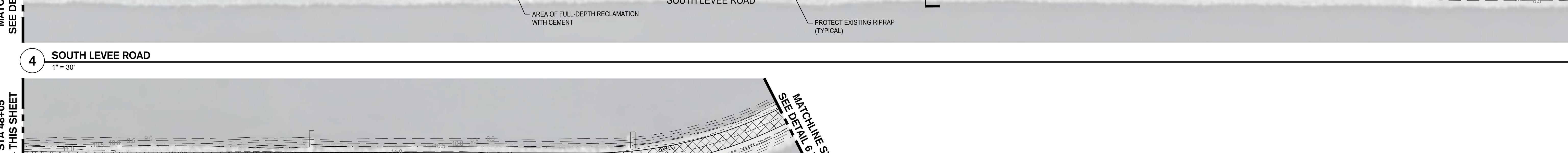
3 SOUTH LEVEE ROAD
1" = 30'

MATCHLINE STA 38+55
SEE DETAIL 4 THIS SHEET



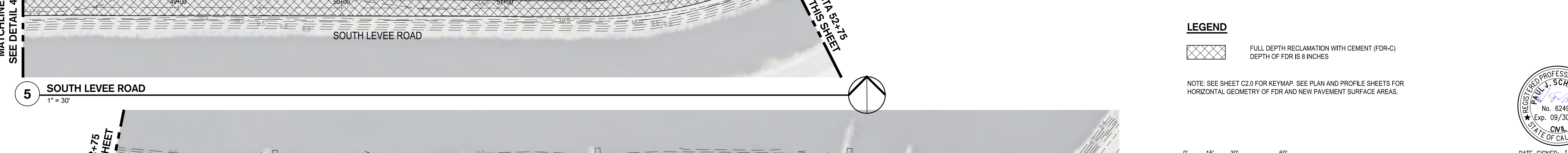
4 SOUTH LEVEE ROAD
1" = 30'

MATCHLINE STA 48+05
SEE DETAIL 5 THIS SHEET



5 SOUTH LEVEE ROAD
1" = 30'

MATCHLINE STA 52+75
SEE DETAIL 6 THIS SHEET



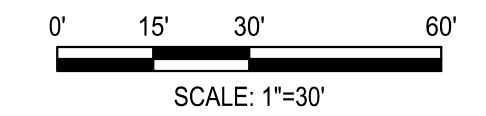
6 SOUTH LEVEE ROAD
1" = 30'

MATCHLINE STA 67+31

LEGEND

FULL DEPTH RECLAMATION WITH CEMENT (FDR-C)
DEPTH OF FDR IS 8 INCHES

NOTE: SEE SHEET C2.0 FOR KEYMAP. SEE PLAN AND PROFILE SHEETS FOR HORIZONTAL GEOMETRY OF FDR AND NEW PAVEMENT SURFACE AREAS.



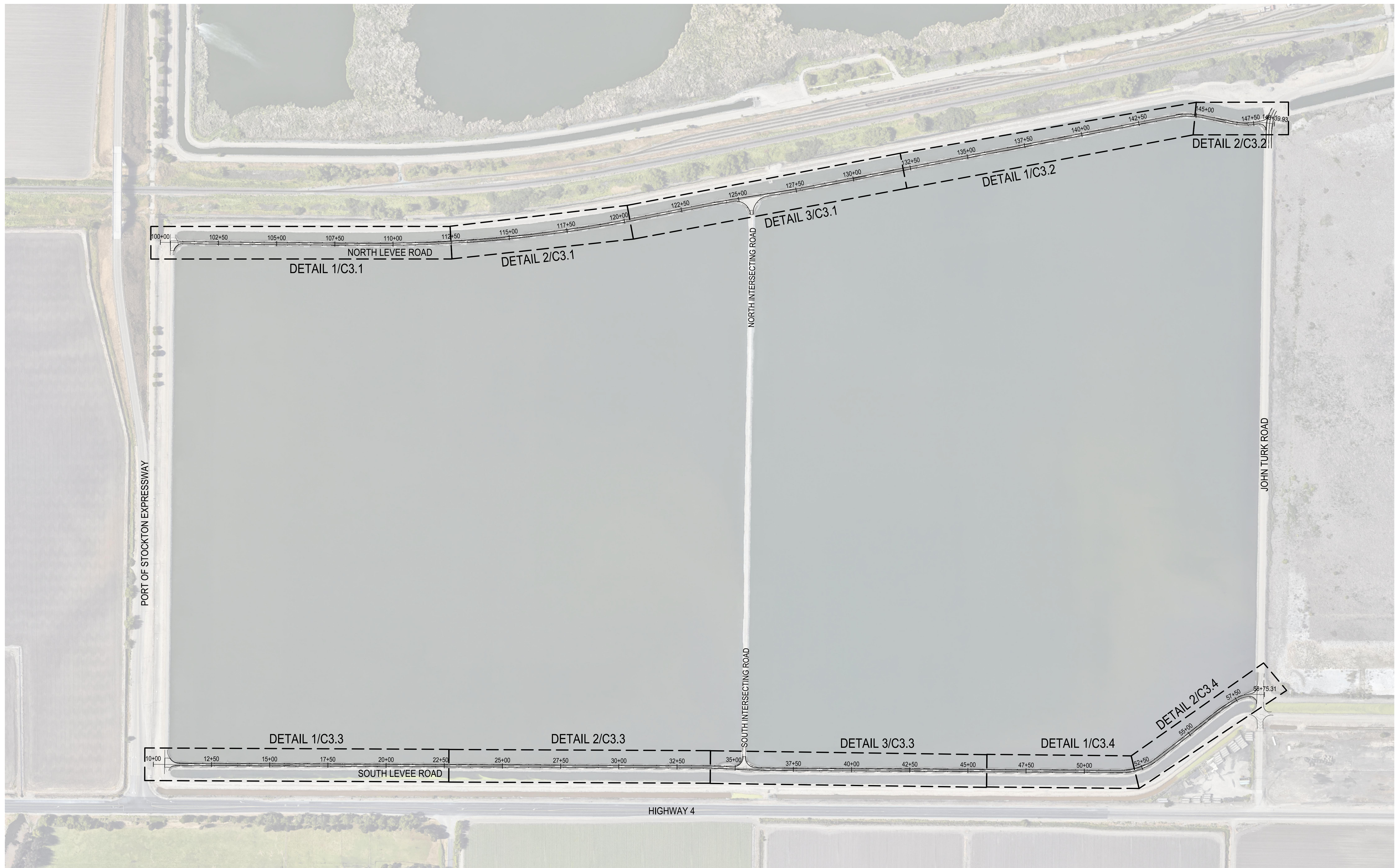
DATE SIGNED: 12/06/23



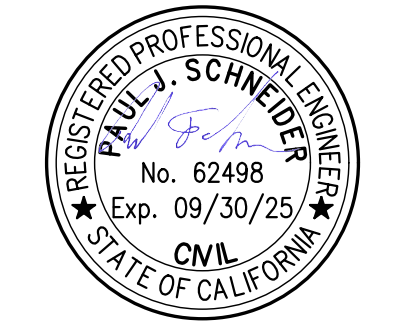
Know what's below.
Call before you dig.

		RWCF OXIDATION POND #2 AND #3 INTERIOR LEVEE ROADS REPAIR	
TOPOGRAPHIC & DEMOLITION PLAN		MUNICIPAL UTILITIES DEPARTMENT CITY OF STOCKTON, CALIFORNIA	
SCALE AS SHOWN DESIGNED BY PJS DRAWN BY MWK CHECKED BY PJS RECORD DWGS.	APPROVED BY: <i>[Signature]</i> DATE: 1/29/24 DEPUTY MUD DIRECTOR STOCKTON, CALIFORNIA	SHEET NO. C2.2	PROJECT NO. P22002

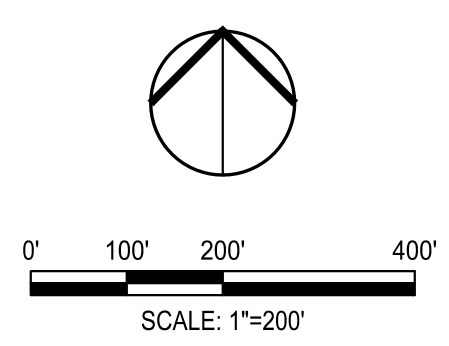
F:\2\projects\212158 - City of Stockton RWCF Oxidation Pond Road Repair\Plan and Graphics\Improvement Plans\212158-C2-2-Topo-03001 LEVEE PLAN.dwg --- 12/06/23



1 PLAN AND PROFILE KEY MAP
1" = 200'



DATE SIGNED: 12/06/23



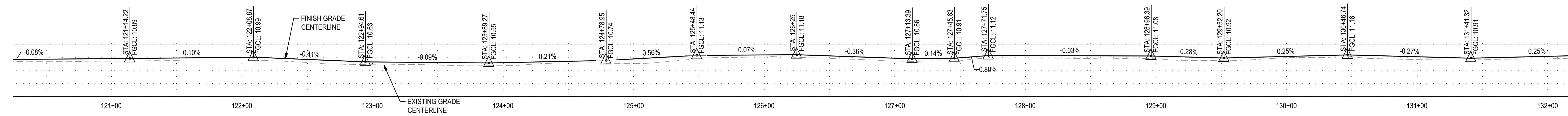
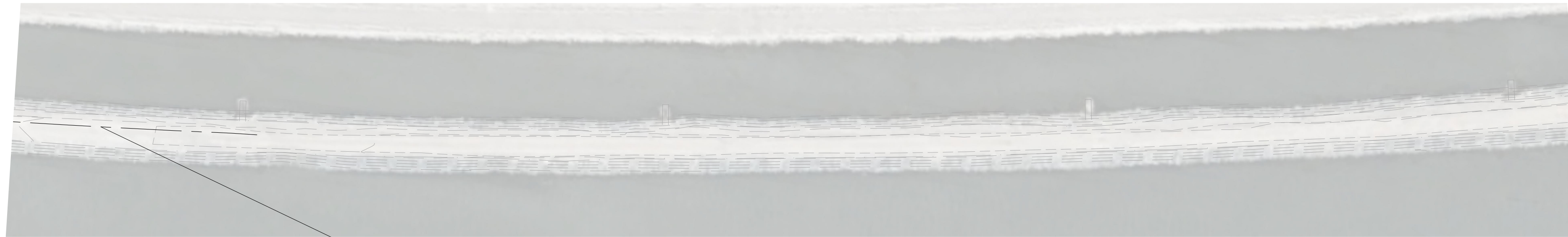
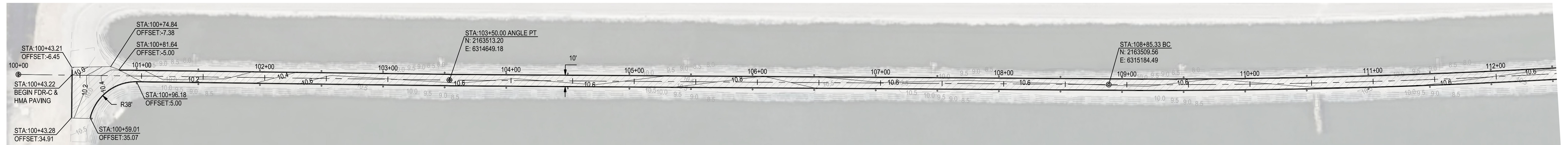
**RWCF OXIDATION POND #2 AND #3
INTERIOR LEVEE ROADS REPAIR**

PLAN AND PROFILE KEY MAP

Revision No.	Description	Date	By	Appr'd. By

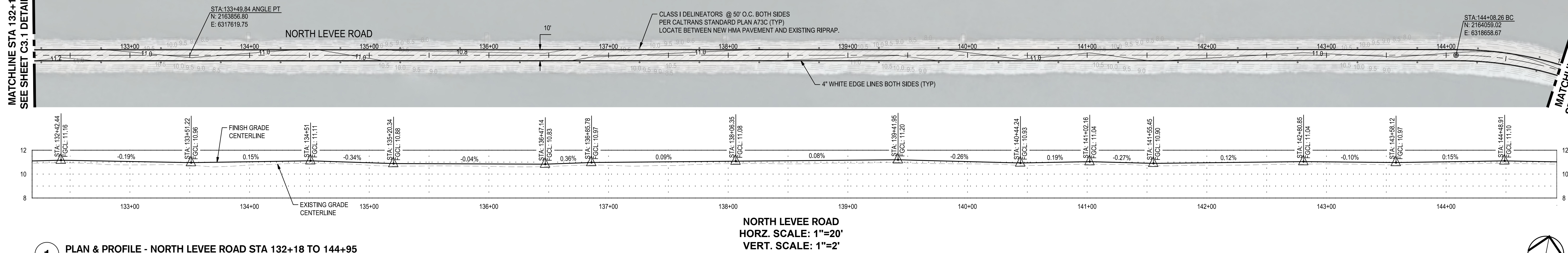
MUNICIPAL UTILITIES DEPARTMENT CITY OF STOCKTON, CALIFORNIA		APPROVED BY: 1/29/24	SHEET NO.
SCALE AS SHOWN	DESIGNED BY PJS	DATE	C3.0
DRAWN BY MWK	CHECKED BY PJS	<i>Paul J. Schneider</i> DEPUTY MUD DIRECTOR STOCKTON, CALIFORNIA	P22002
RECORD DWGS.			PROJECT NO.

F:\2\projects\212158_City of Stockton RWCF Oxidation Ponds Repair\Drawings and Graphics\Improvement Plans\212158-C3.0-PLAN AND PROFILE KEY MAP.dwg -- 12/06/23



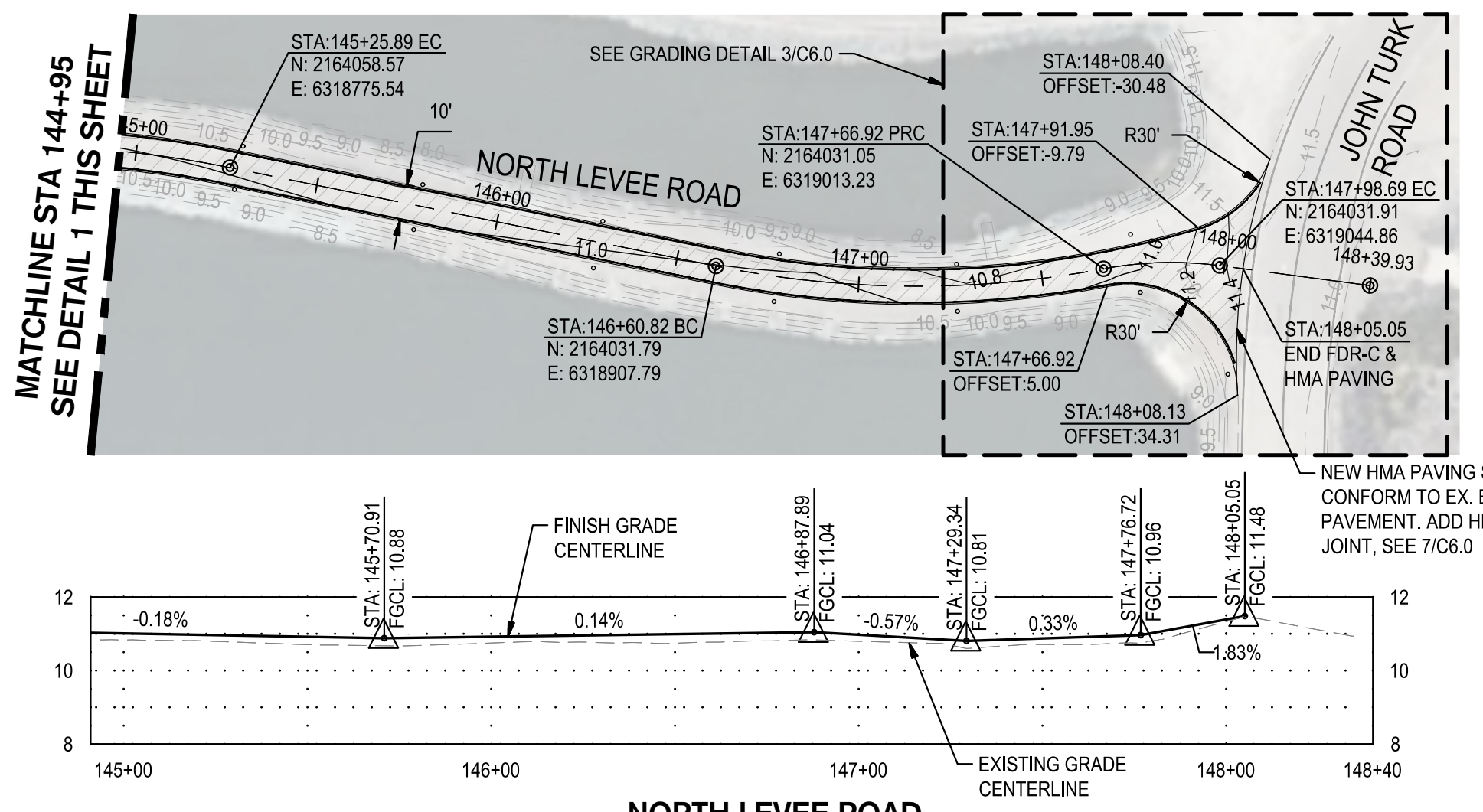
MATCHLINE STA 132+18
SEE SHEET C3.1 DETAIL 3

MATCHLINE STA 144+95
SEE SHEET C3.2 DETAIL 2 THIS SHEET



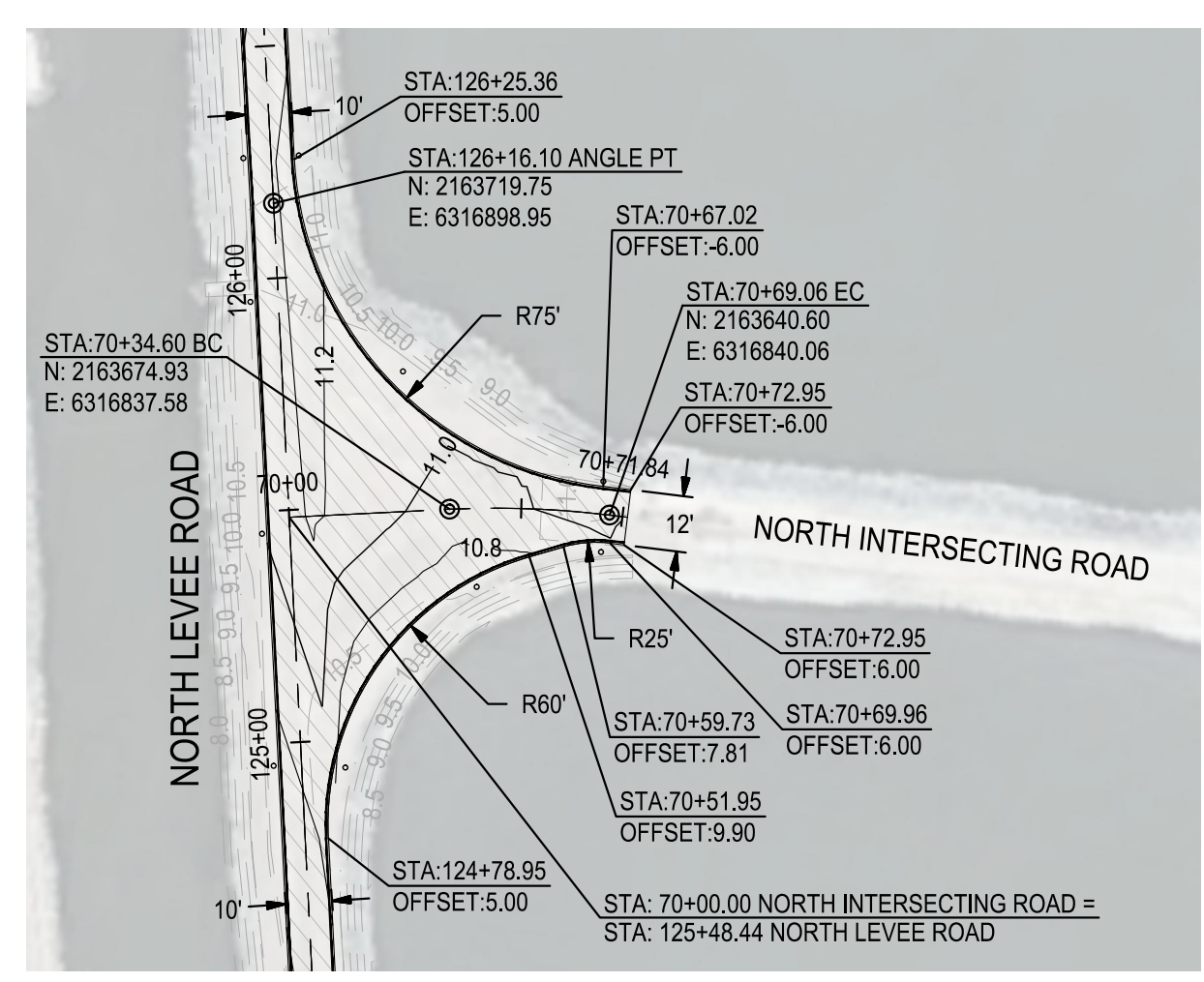
1 PLAN & PROFILE - NORTH LEVEE ROAD STA 132+18 TO 144+95
1" = 40'

NORTH LEVEE ROAD
HORZ. SCALE: 1"=20'
VERT. SCALE: 1"=2'



2 PLAN & PROFILE - NORTH LEVEE ROAD STA 144+95 TO 148+40
1" = 40'

NORTH LEVEE ROAD
HORZ. SCALE: 1"=20'
VERT. SCALE: 1"=2'

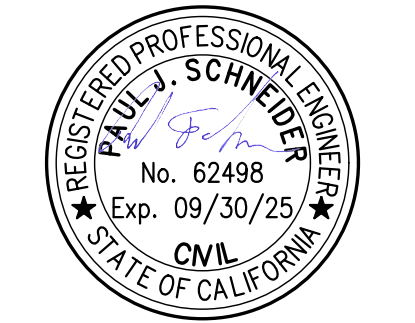
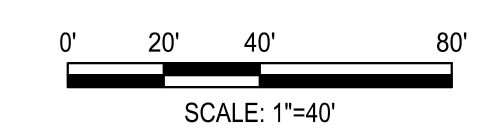


3 PLAN & PROFILE - NORTH INTERSECTING ROAD STA 70+00 TO 70+72
1" = 40'

NORTH INTERSECTING ROAD
HORZ. SCALE: 1"=20'
VERT. SCALE: 1"=2'

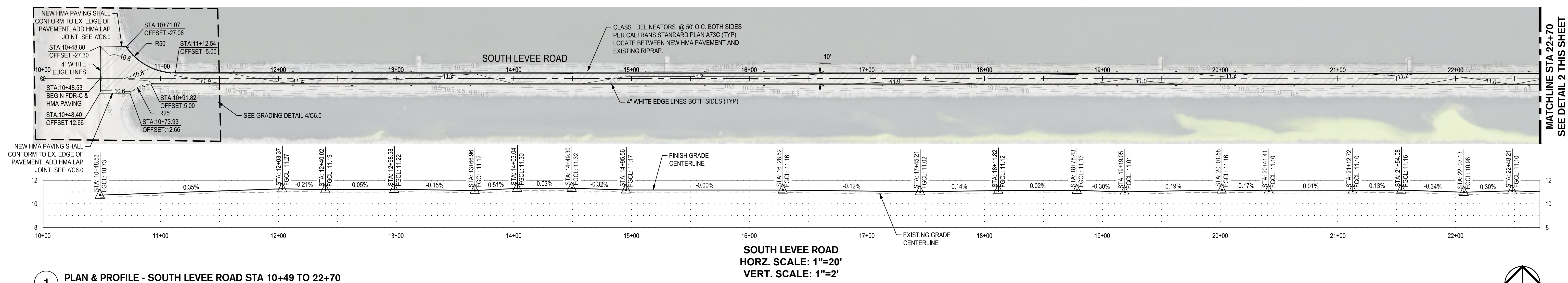
LEGEND

	VEHICULAR ASPHALT PAVING
	2.5" HOT MIX ASPHALT OVER
	8" FULL DEPTH RECLAMATION WITH CEMENT

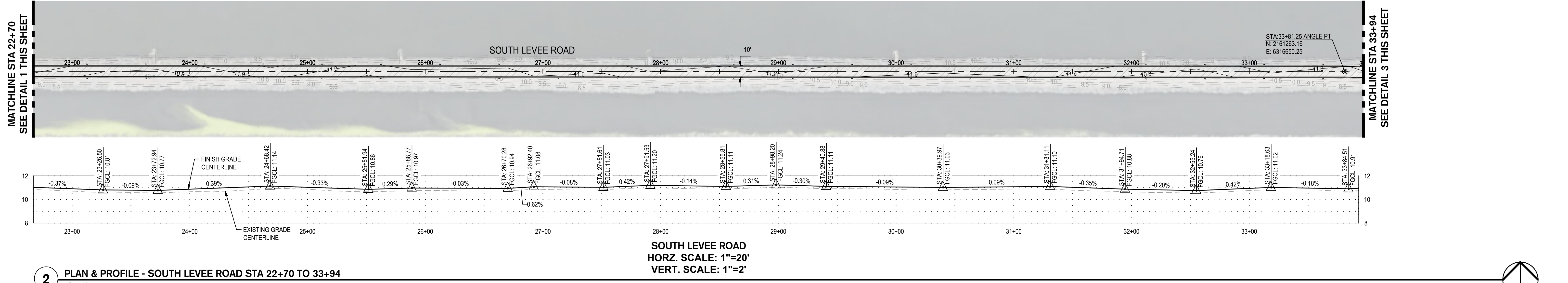


DATE SIGNED: 12/06/23

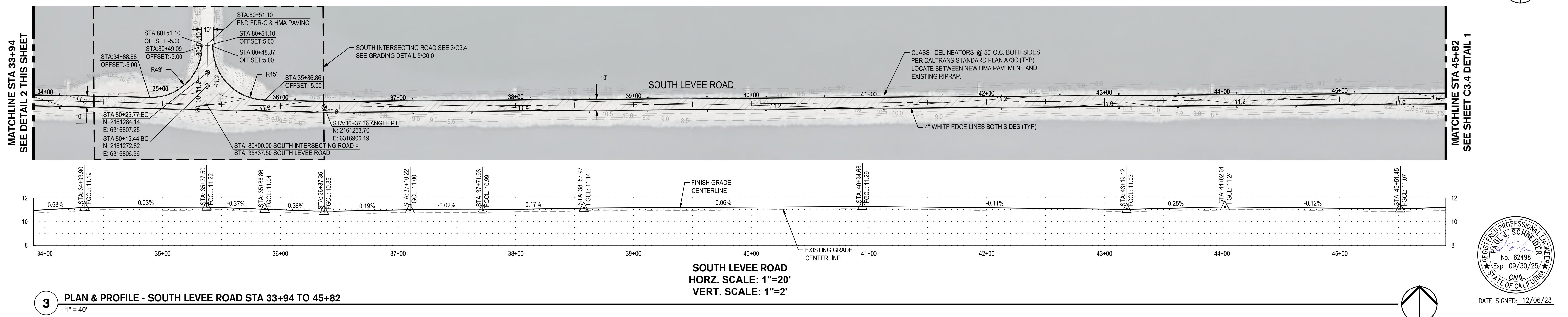
 8428 Brookside Road, Stockton, California 95219 209-943-2021 www.stegfriedeng.com Fax: 209-942-0214		CIVIL STRUCTURAL LANDSCAPE ARCHITECTURE SURVEYING PLANNING ATHLETIC FACILITY DESIGN GEOTECHNICAL		
		RWCF OXIDATION POND #2 AND #3 INTERIOR LEVEE ROADS REPAIR		
PLAN & PROFILE				
MUNICIPAL UTILITIES DEPARTMENT CITY OF STOCKTON, CALIFORNIA				
Revision No.	Description	Date	By	Appr'd. By
SCALE AS SHOWN		APPROVED BY:	DATE	SHEET NO.
DESIGNED BY PJS				C3.2
DRAWN BY MWK				P22002
CHECKED BY PJS		DEPUTY MUO DIRECTOR STOCKTON, CALIFORNIA		PROJECT NO.
RECORD DWGS.				



1 PLAN & PROFILE - SOUTH LEVEE ROAD STA 10+49 TO 22+70
1" = 40'



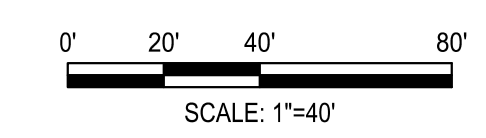
2 PLAN & PROFILE - SOUTH LEVEE ROAD STA 22+70 TO 33+94
1" = 40'



3 PLAN & PROFILE - SOUTH LEVEE ROAD STA 33+94 TO 45+82
1" = 40'

LEGEND

	VEHICULAR ASPHALT PAVING
	2.5" HOT MIX ASPHALT OVER
	8" FULL DEPTH RECLAMATION WITH CEMENT

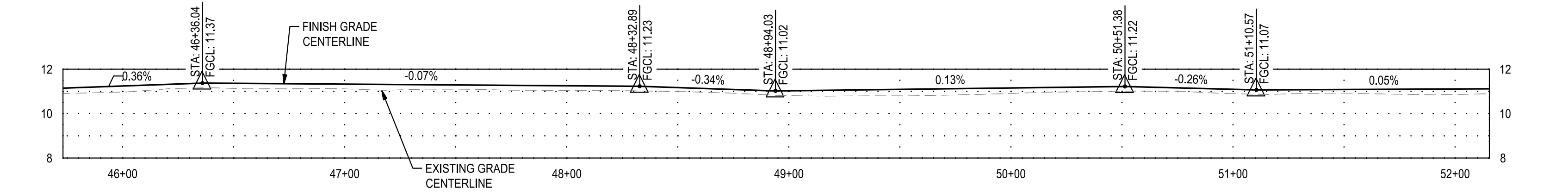
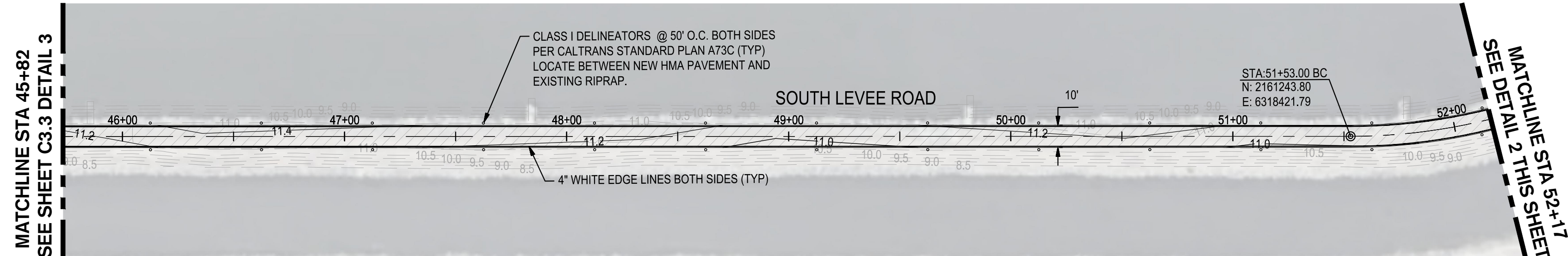


DATE SIGNED: 12/06/23

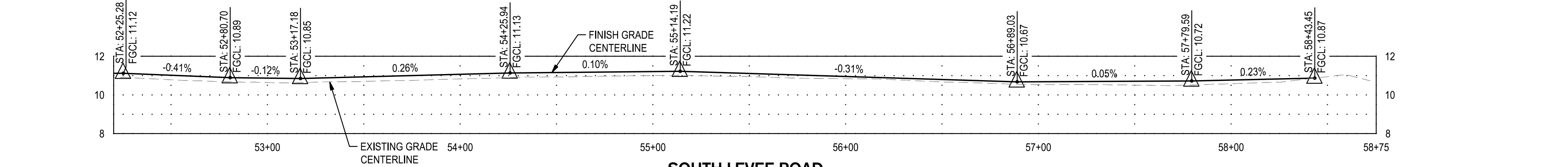
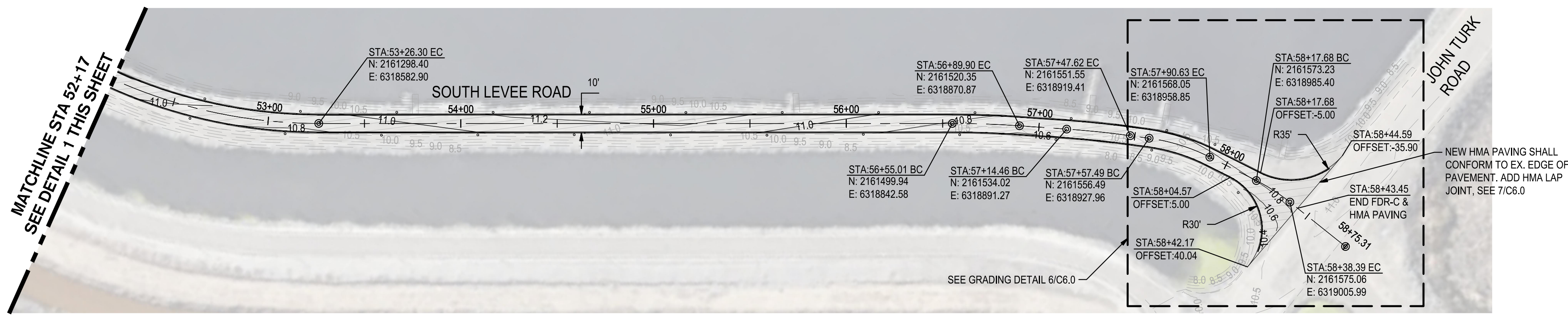
		RWCF OXIDATION POND #2 AND #3 INTERIOR LEVEE ROADS REPAIR		
		PLAN & PROFILE		
MUNICIPAL UTILITIES DEPARTMENT CITY OF STOCKTON, CALIFORNIA		SCALE AS SHOWN DESIGNED BY PJS DRAWN BY MWK CHECKED BY PJS RECORD DWGS.	APPROVED BY: <i>[Signature]</i> DATE: 1/29/24 DEPUTY MUNICIPAL DIRECTOR STOCKTON, CALIFORNIA	SHEET NO. C3.3 P22002 PROJECT NO.

F:\22\projects\22158_City of Stockton RWCF Oxidation Pond Riprap\Drawings and Graphics\Environment Plans\22158-C3.3-PLAN & PROFILE - SOUTH LEVEE ROAD.dwg - 12/06/23

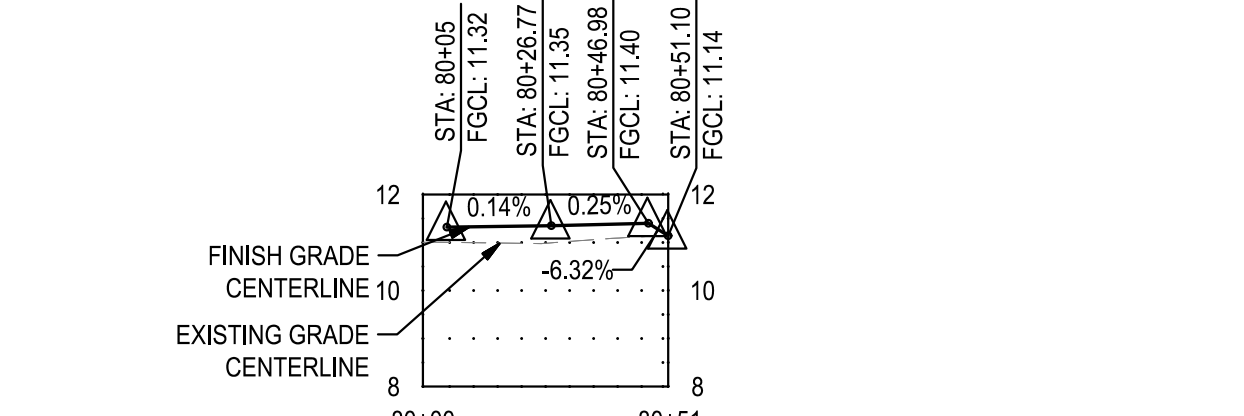
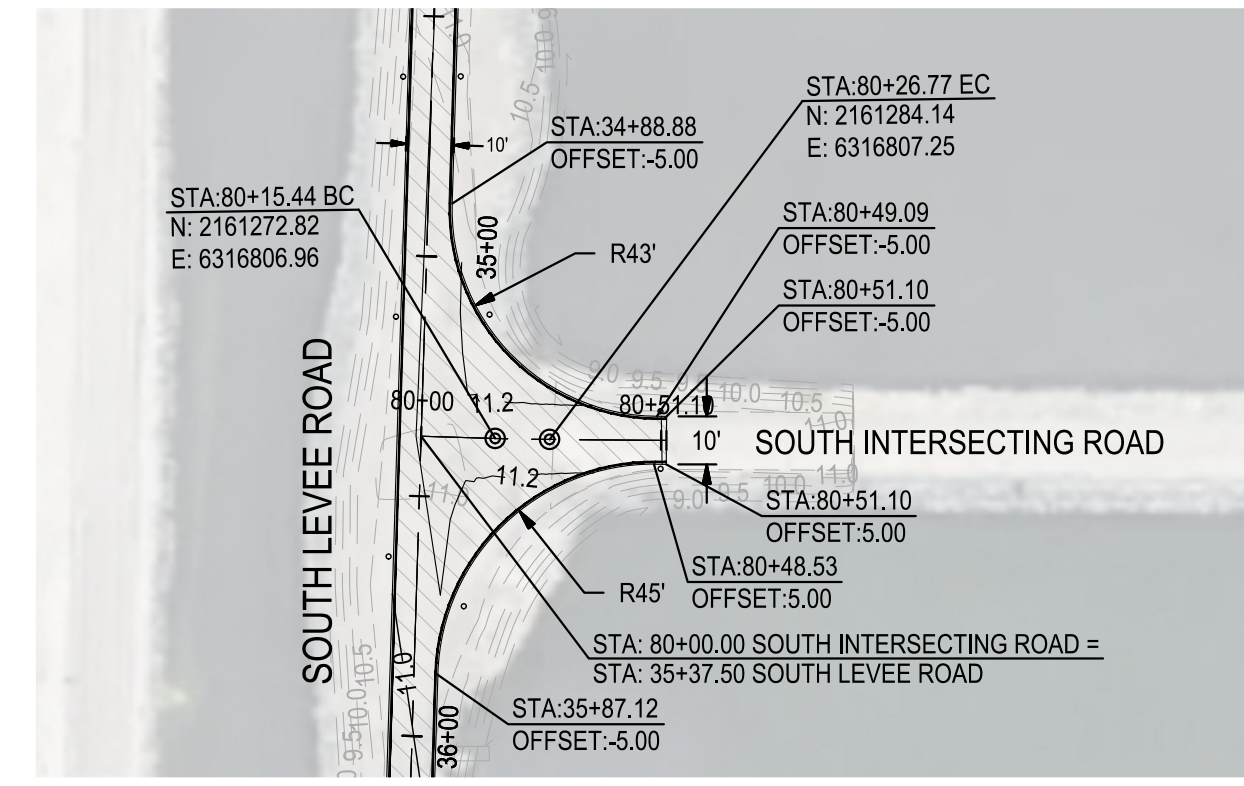
MATCHLINE STA 45+82
SEE SHEET C3.3 DETAIL 3



1 PLAN & PROFILE - SOUTH LEVEE ROAD STA 45+82 TO 52+17
1" = 40'



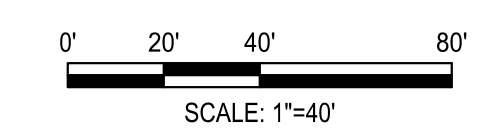
2 PLAN & PROFILE - SOUTH LEVEE ROAD STA 52+17 TO 58+18
1" = 40'



3 PLAN & PROFILE - SOUTH INTERSECTING ROAD STA 80+00 TO 80+51
1" = 40'

LEGEND

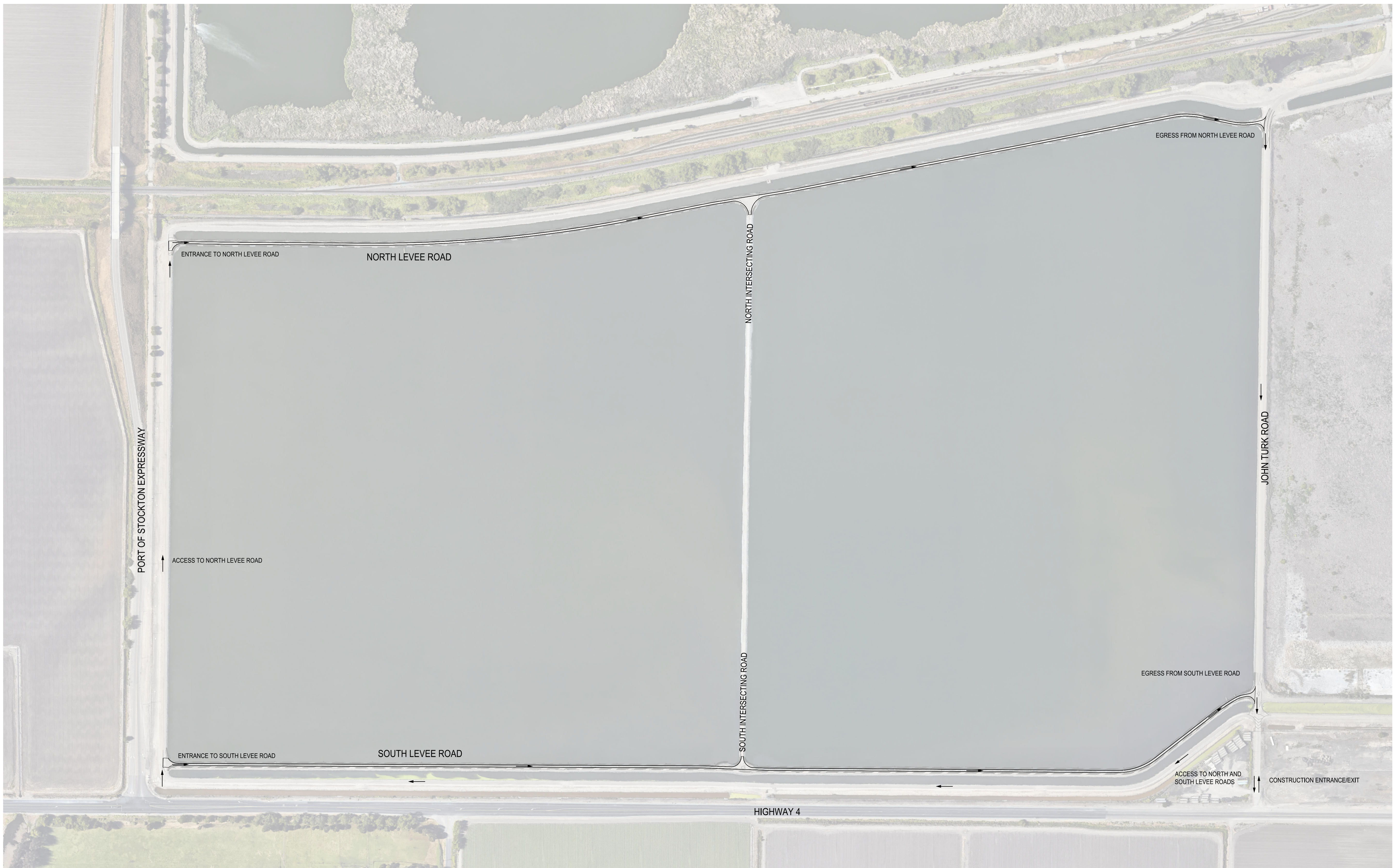
VEHICULAR ASPHALT PAVING
2.5" HOT MIX ASPHALT OVER
8" FULL DEPTH RECLAMATION WITH CEMENT



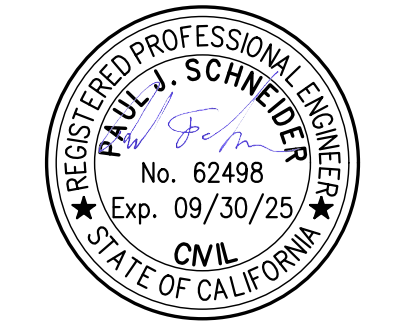
DATE SIGNED: 12/06/23

		RWCF OXIDATION POND #2 AND #3 INTERIOR LEVEE ROADS REPAIR	
PLAN & PROFILE		MUNICIPAL UTILITIES DEPARTMENT CITY OF STOCKTON, CALIFORNIA	
SCALE AS SHOWN DESIGNED BY PJS DRAWN BY MWK CHECKED BY PJS RECORD DWGS.	APPROVED BY: <i>[Signature]</i> DATE 1/29/24 DEPUTY MUD DIRECTOR STOCKTON, CALIFORNIA	SHEET NO. C3.4 P22002 PROJECT NO.	

F:\2\projects\212158 - City of Stockton RWCF Oxidation Ponds Road Repair\Drawings and Graphics\Improvement Plans\212158-C3.4-PLAN & PROFILE - SOUTH LEVEE ROAD.dwg 12/06/23

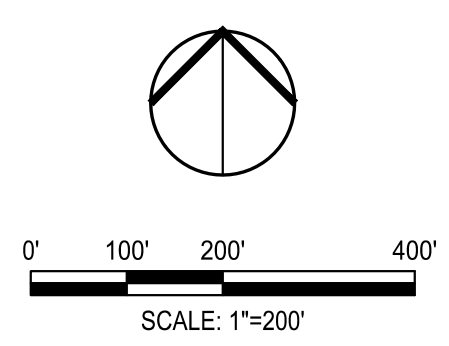


1 SITE ACCESS PLAN
1" = 200'



DATE SIGNED: 12/06/23

F:\2\projects\12158_City of Stockton RWCF Oxidation Ponds Repair\Graphics\Improvement Plans\12158-C4.0-SITE ACCESS PLAN.dwg --- 12/06/23



SIEGFRIED
 CIVIL
 STRUCTURAL
 LANDSCAPE
 ARCHITECTURE
 SURVEYING
 PLANNING
 ATHLETIC FACILITY
 DESIGN
 GEOTECHNICAL

9428 Brookside Road, Stockton, California 95210
 209-943-2021 www.siegfriedeng.com Fax: 209-942-0214

**RWCF OXIDATION POND #2 AND #3
 INTERIOR LEVEE ROADS REPAIR**

SITE ACCESS PLAN

Revision No.	Description	Date	By	Appr'd. By

MUNICIPAL UTILITIES DEPARTMENT CITY OF STOCKTON, CALIFORNIA		APPROVED BY: 1/29/24 DATE	SHEET NO. C4.0
SCALE AS SHOWN	DESIGNED BY PJS	 DEPUTY MUD DIRECTOR STOCKTON, CALIFORNIA	PROJECT NO. P22002
DRAWN BY MWK	CHECKED BY PJS		
RECORD DWGS.			



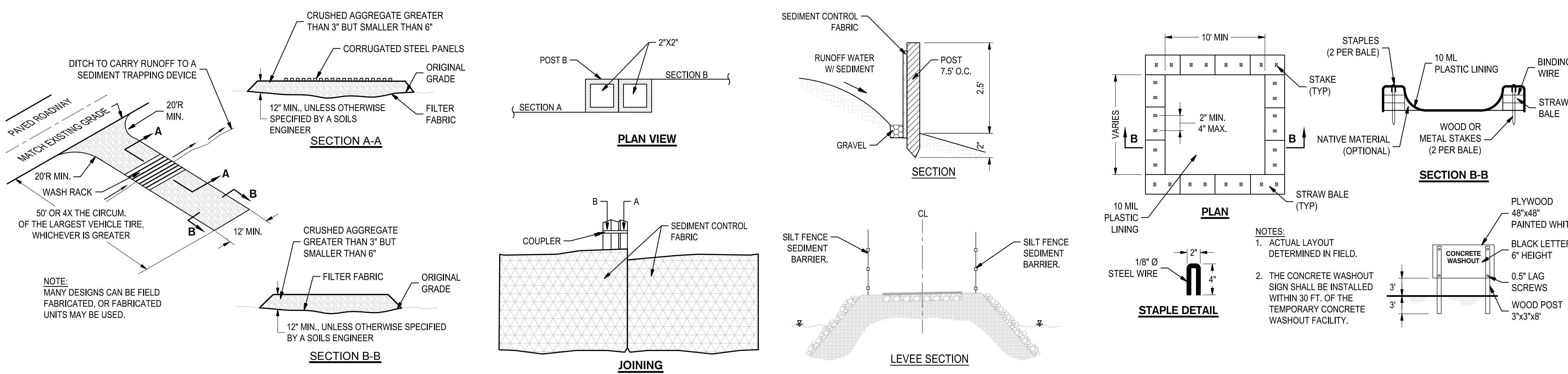
EROSION CONTROL GENERAL NOTES

- AREA OF DISTURBED SOIL WILL BE MORE THAN ONE ACRE IN SIZE. THEREFORE THE PROJECT WILL BE REQUIRED TO OBTAIN COVERAGE UNDER THE STATE'S CONSTRUCTION GENERAL PERMIT FOR STORM WATER DISCHARGE, ORDER 2022-0057-DWQ. THE CONTRACTOR SHALL BE REQUIRED TO OBTAIN THE SERVICES OF A QUALIFIED SWPPP DEVELOPER (QSD) AND HAVE THEM PREPARE A STORM WATER POLLUTION PREVENTION PLAN (SWPPP) AND ASSOCIATED PERMIT REGISTRATION DOCUMENTS REQUIRED TO APPLY FOR COVERAGE AND PROVIDE INSPECTIONS. THE CONTRACTOR SHALL ALSO BE REQUIRED TO OBTAIN THE SERVICES OF A QUALIFIED SWPPP PRACTITIONER (QSP) TO IMPLEMENT THE PLANS IN THE SWPPP AND PROVIDE INSPECTIONS. THE CONTRACTOR SHALL COORDINATE WITH THE MUNICIPAL UTILITIES DEPARTMENT WHEN FILING PERMIT REGISTRATION DOCUMENTS.
- PLANS ARE DIAGRAMMATIC AND ARE NOT INTENDED TO SHOW ALL OFFSETS. THE SITE IS DYNAMIC AND CHANGES ON A DAILY BASIS. CHANGES SHOULD BE MADE ACCORDING TO EXISTING CONDITIONS. BECAUSE IT IS IMPOSSIBLE TO PREDICT ALL POSSIBLE SITUATIONS, CONTRACTOR SHALL USE BEST MANAGEMENT PRACTICES TO ENSURE QUALITY CONTROL.
- IT IS THE CONTRACTORS SOLE RESPONSIBILITY FOR CONDUCTING HIS/HER OPERATIONS IN ADHERENCE TO THE SWPPP. THE CONTRACTOR IS RESPONSIBLE FOR ANY FINES, DELAYS, AND/OR DAMAGES RESULTING FROM ANY STATE WATER QUALITY CONTROL BOARD SANCTIONS CAUSED BY THE OPERATION OF THE CONTRACTOR OF HIS/HER SUBCONTRACTORS.
- THE FOLLOWING PLANS ARE ACCURATE FOR EROSION CONTROL PURPOSES ONLY. THE CONTRACTOR SHALL FOLLOW THESE PLANS UNLESS FIELD CONDITIONS DICTATE MODIFICATION. IF MODIFICATION IS NECESSARY, A SWPPP AMENDMENT MUST BE DONE. THIS MAY REQUIRE MODIFICATION TO THESE DRAWINGS AND ENGINEER CONCURRENCE.
- IF ANY HAZARDOUS MATERIALS OR WASTES WHICH HAVE BEEN TREATED, STORED, DISPOSED, SPILLED, OR LEAKED IN SIGNIFICANT QUANTITIES ONTO THE CONSTRUCTION SITE, THE CONTRACTOR SHALL BE RESPONSIBLE TO REMOVE THEM FROM THE SITE AND DISPOSE OF PROPERLY.
- THE CONTRACTOR SHALL KEEP MAINTENANCE, INSPECTION, AND REPAIR PROCEDURES TO ENSURE THAT ALL GRADED SURFACES, BERMS, EROSION AND SEDIMENT CONTROL MEASURES, AND OTHER CONTROLS ARE MAINTAINED IN GOOD AND EFFECTIVE CONDITION AND ARE PROMPTLY REPAIRED OR RESTORED WHEN NECESSARY. ANY DEWATERING WATER SHALL NOT BE DISCHARGED DIRECTLY INTO THE SANITARY SEWER SYSTEM.
- PAVEMENT CLEANING - FLUSHING OF ROADS TO REMOVE DIRT AND CONSTRUCTION DEBRIS IS PROHIBITED UNLESS PROPER SEDIMENT CONTROLS ARE USED. PREFERABLY, AREAS REQUIRING CLEANING SHOULD BE SWEEPED.
- ALL STOCKPILES OF MATERIALS THAT ARE NOT GOING TO BE USED FOR 14 DAYS SHALL BE COVERED.
- CONTRACTOR TO USE BEST MANAGEMENT PRACTICES (BMPs) THROUGHOUT CONSTRUCTION. USE ALL BMPs THAT APPLY TO THE PROJECT, INCLUDING BUT NOT LIMITED TO THE FOLLOWING BMPs:
 - SOLID WASTE MANAGEMENT - CALIFORNIA STORMWATER BMP HANDBOOK SECTION WM-5
 - MATERIAL STORAGE - CALIFORNIA STORMWATER BMP HANDBOOK SECTION WM-1
 - PAVING - CALIFORNIA STORMWATER BMP HANDBOOK SECTION NS-3
 - DUST CONTROL, SEDIMENT CONTROL, EROSION CONTROL AND CONCRETE WASHOUT AREAS - SHOWN ON THIS SHEET WITH DETAILS
- CONTRACTOR SHALL ENSURE THAT CONSTRUCTION ACTIVITIES DO NOT DEPOSIT SEDIMENT ONTO THE RWCF PROPERTY OR PUBLIC ROADWAYS.
- CONTRACTOR SHALL USE STREET SWEEPING OR OTHER DRY-SWEEPING METHOD, AS NECESSARY, TO REMOVE CONSTRUCTION-RELATED SEDIMENTS FROM PAVEMENT IN PROJECT AREA AND PUBLIC ROADWAYS.
- CONTRACTOR SHALL SCHEDULE WORK FOR DRY-WEATHER DAYS WHEN NO RAIN IS IN THE IMMEDIATE FORECAST.
- A MINIMUM 200-FOOT SEPARATION SHALL BE MAINTAINED BETWEEN THE PUBLIC RIGHT-OF-WAY AND MATERIAL STOCKPILES, DEBRIS PILES, OR CONTAINERS AND EQUIPMENT STORAGE DURING THE CONSTRUCTION PROCESS. IF SUCH STORAGE MUST BE LOCATED WITHIN 200 FEET OF THE PUBLIC RIGHT-OF-WAY, A SIX-FOOT HIGH OPAQUE FENCE SHALL SHIELD THE STORAGE AREA FROM VIEW WHEN THE STORAGE AREA IS IN ACTIVE FOR MORE THAN EIGHT HOURS. THIS REQUIREMENT SHALL BE INCORPORATED INTO THE SPECIFICATIONS FOR ALL CONSTRUCTION PLANS, SUBJECT TO REVIEW AND WRITTEN APPROVAL BY THE MUNICIPAL UTILITIES DEPARTMENT.
- DURING CONSTRUCTION ACTIVITIES, ALL FOOD-RELATED TRASH ITEMS SHALL BE ENCLOSED IN SEALED CONTAINER AND REGULARLY REMOVED FROM THE PROJECT SITE TO AVOID ATTRACTING WILDLIFE TO THE PROJECT SITE. PETS SHALL NOT BE ALLOWED ON THE CONSTRUCTION SITE. THE PROPER LOCATION OF THE TRASH CONTAINERS SHALL BE SUBJECT TO THE REVIEW AND WRITTEN APPROVAL OF THE MUNICIPAL UTILITIES DEPARTMENT.
- THE DEVELOPMENT SITE SHALL BE CONTROLLED OF WEEDS AND FREE OF DEBRIS AND LITTER. THE APPLICANT SHALL PROVIDE PROTECTION AGAINST WIND AND WATER SOIL EROSION.

EROSION CONTROL LEGEND

SYMBOL	DESCRIPTION
	SILT FENCE SEDIMENT BARRIER, SEE DETAIL 2 THIS SHEET
	STABILIZED CONSTRUCTION ENTRANCE, CONTRACTOR TO DETERMINE LOCATION, SEE DETAIL 1 THIS SHEET
	CONCRETE WASHOUT, CONTRACTOR TO DETERMINE LOCATION, SEE DETAIL 3 THIS SHEET

1 EROSION & SEDIMENTATION CONTROL PLAN
1" = 250'



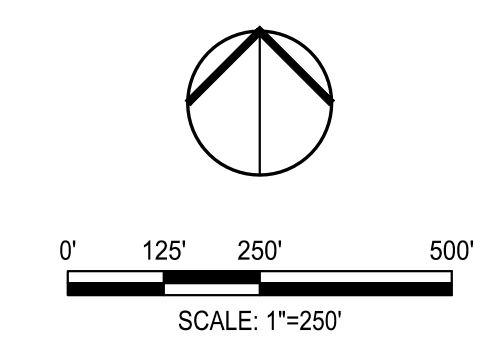
1 STABILIZED CONSTRUCTION ENTRANCE/OUTLET TIRE WASH
SCALE: NTS

2 SILT FENCE SEDIMENT BARRIER
SCALE: NTS

3 CONCRETE WASHOUT
SCALE: NTS



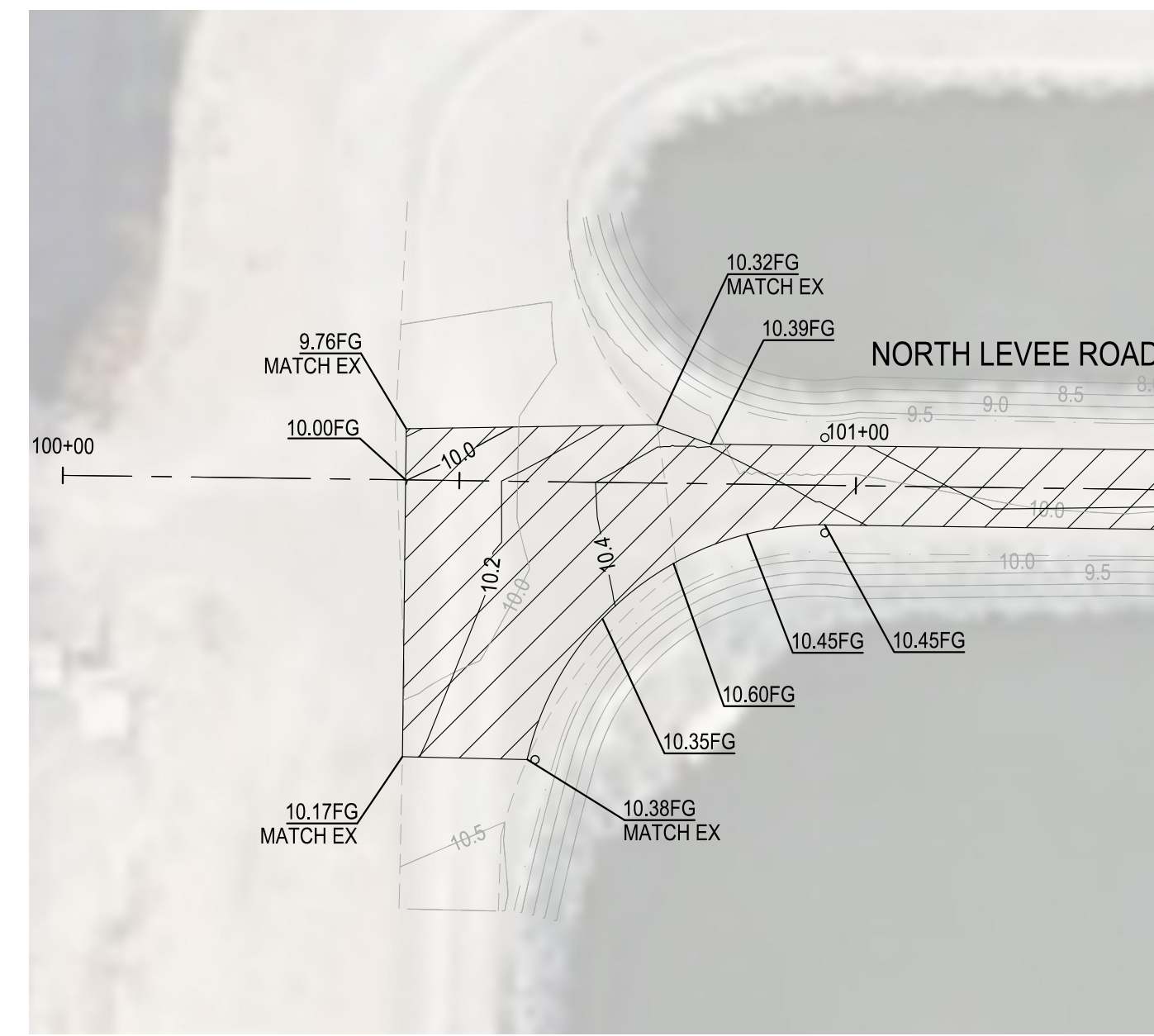
Know what's below.
Call before you dig.



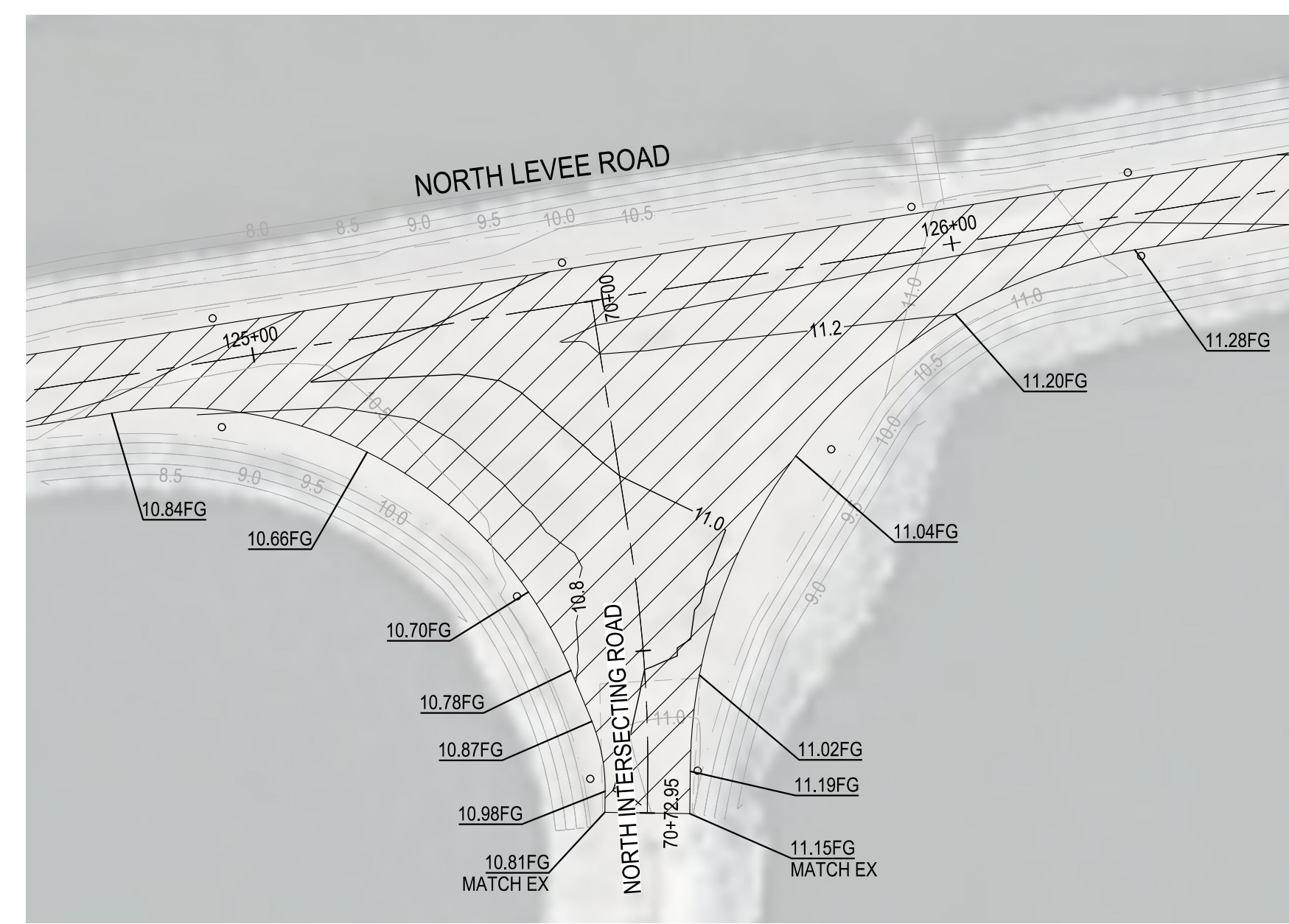
DATE SIGNED: 12/06/23

		RWCF OXIDATION POND #2 AND #3 INTERIOR LEVEE ROADS REPAIR	
EROSION & SEDIMENTATION CONTROL PLAN		MUNICIPAL UTILITIES DEPARTMENT CITY OF STOCKTON, CALIFORNIA	
Revision No.	Description	Date	By
SCALE	AS SHOWN	APPROVED BY:	1/29/24 DATE
DESIGNED BY	PJS	SHEET NO.	C5.0
DRAWN BY	MWK	CHECKED BY	P22002
CHECKED BY	PJS	DEPUTY MUD DIRECTOR	STOCKTON, CALIFORNIA
RECORD DWGS.	PROJECT NO.		

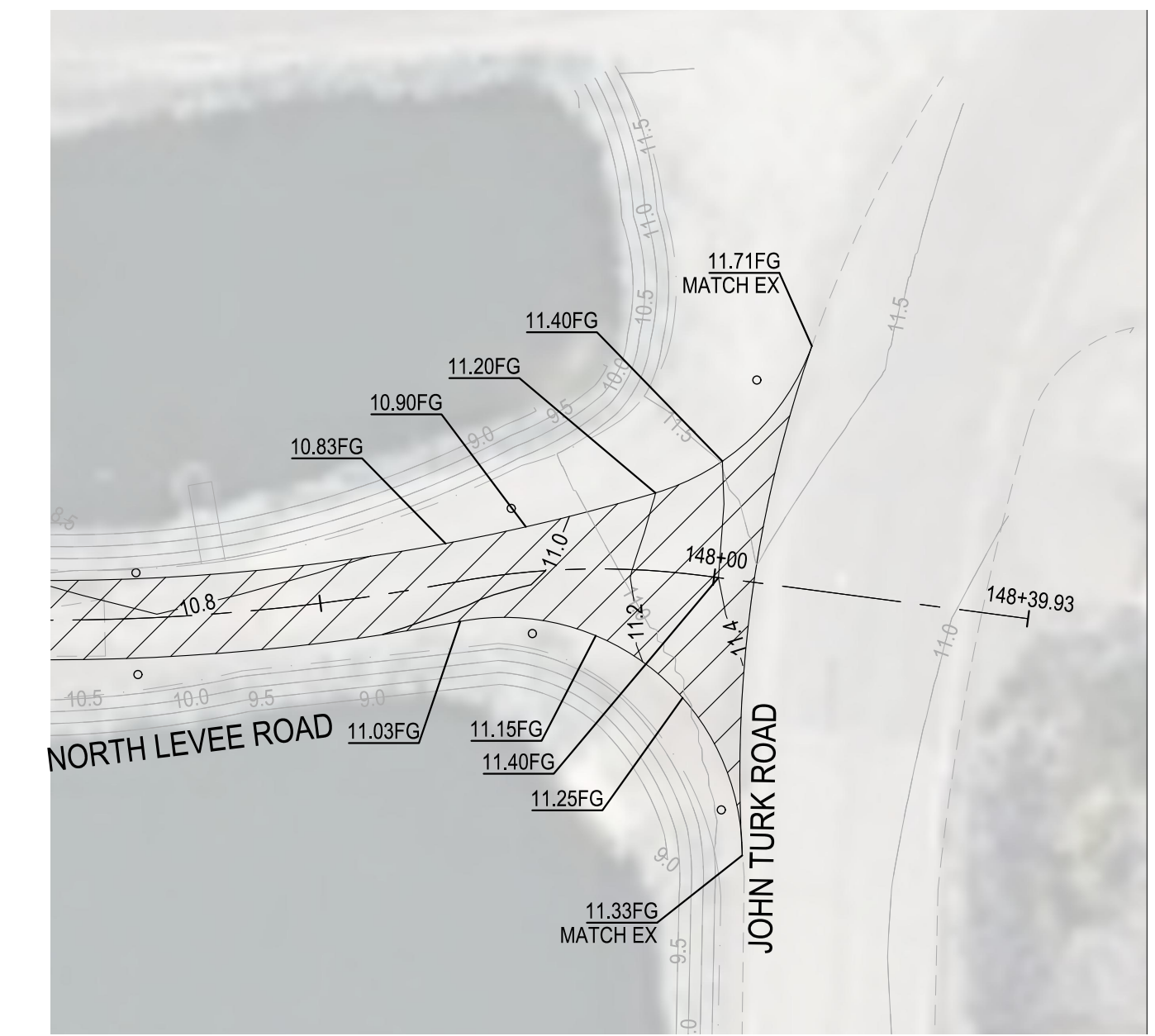
F:\2023\projects\212158 - City of Stockton RWCF Oxidation Pond #2 and #3 Interior Levee Roads Repair\Drawings\12/06/23



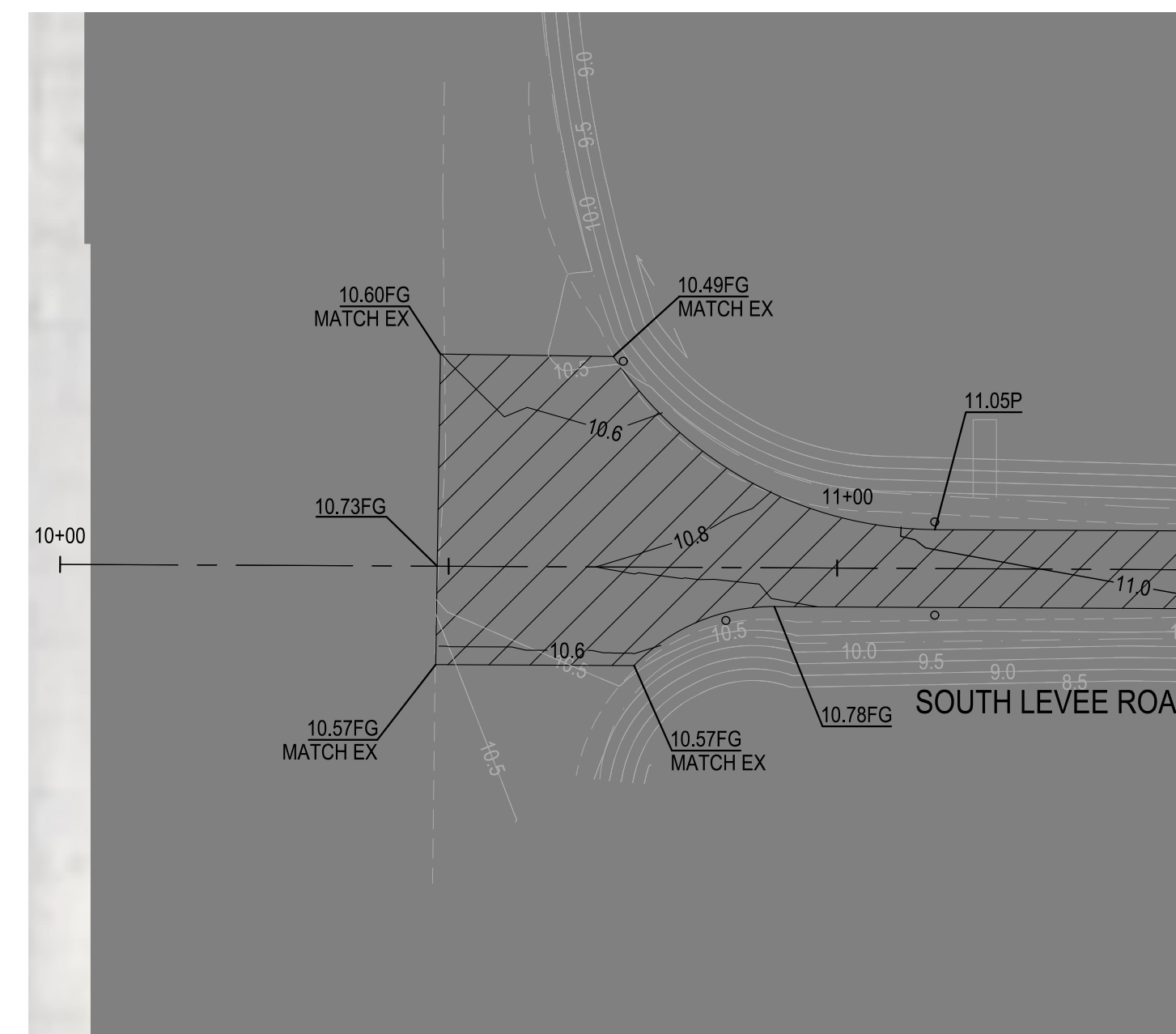
1 GRADING DETAIL 1
1" = 20'



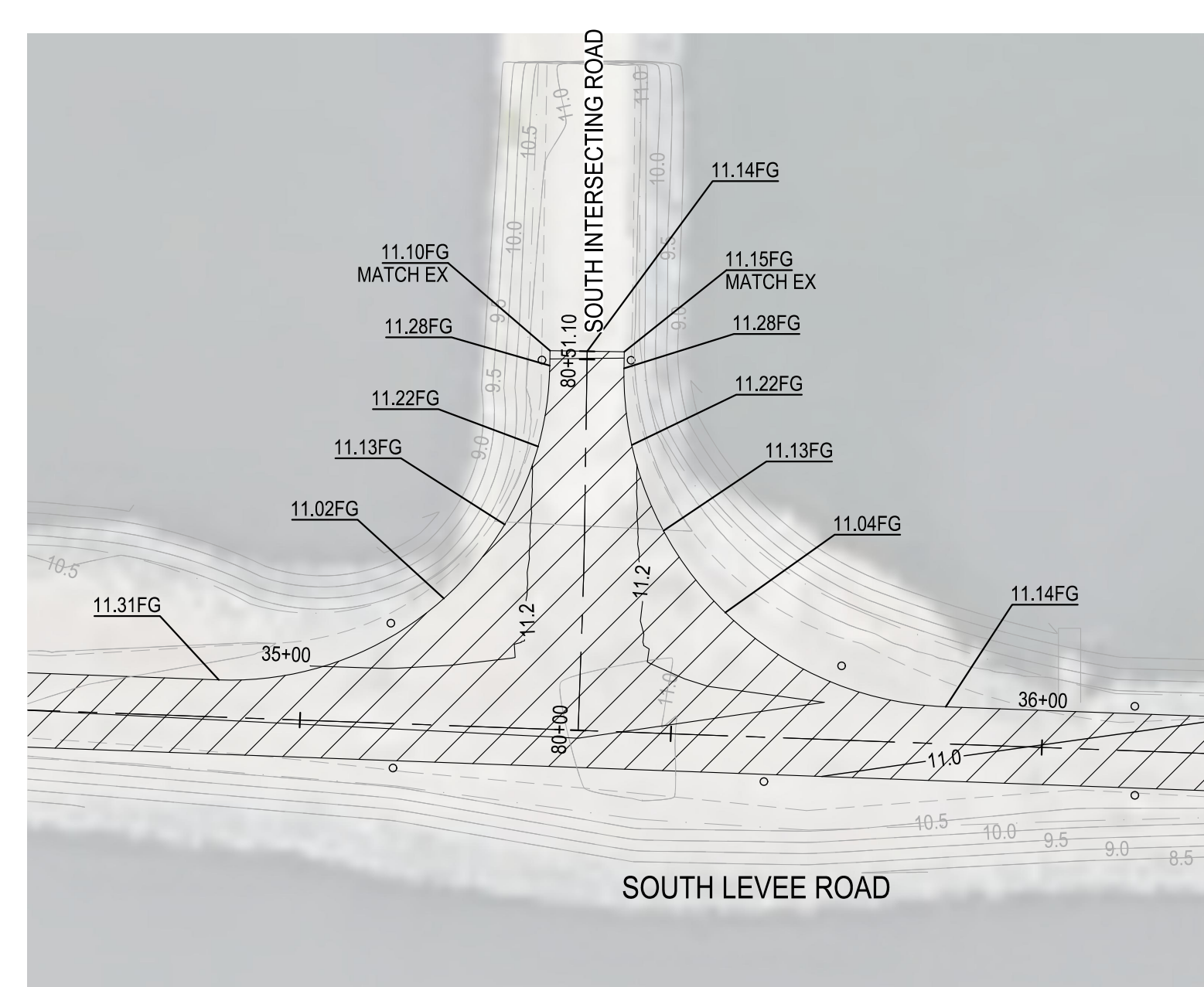
2 GRADING DETAIL 2
1" = 20'



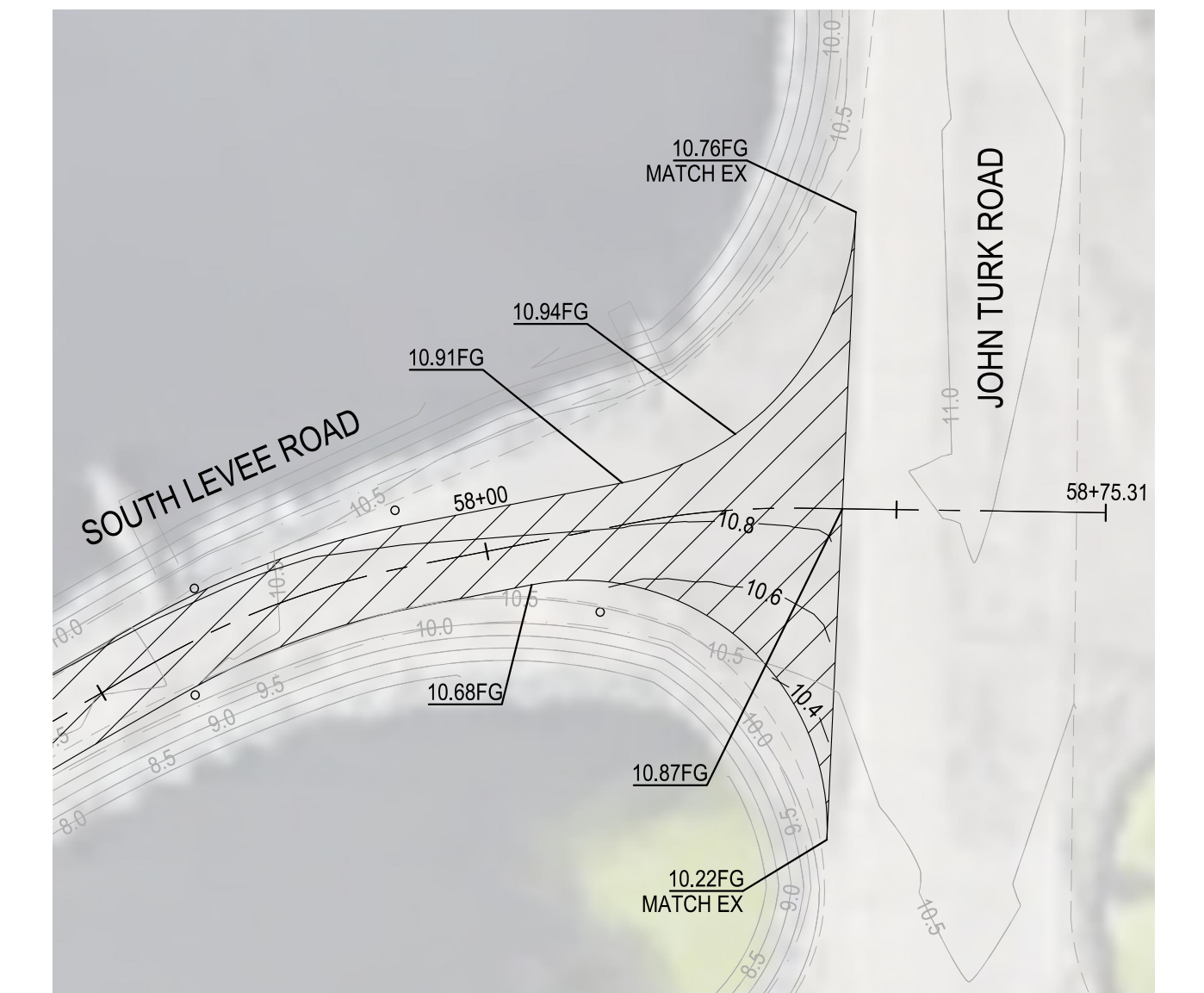
3 GRADING DETAIL 3
1" = 20'



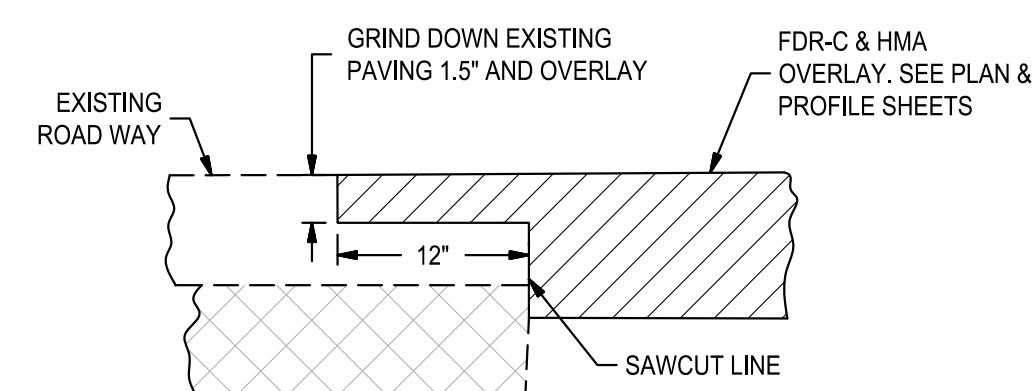
4 GRADING DETAIL 4
1" = 20'



5 GRADING DETAIL 5
1" = 20'



6 GRADING DETAIL 6
1" = 20'



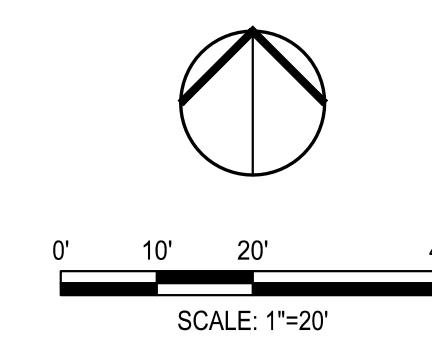
7 HMA LAP JOINT DETAIL
NTS



DATE SIGNED: 12/06/23



Know what's below.
Call before you dig.



		<ul style="list-style-type: none"> ■ CIVIL ■ STRUCTURAL ■ LANDSCAPE ARCHITECTURE ■ SURVEYING ■ PLANNING ■ ATHLETIC FACILITY DESIGN ■ GEOTECHNICAL 		RWCF OXIDATION POND #2 AND #3 INTERIOR LEVEE ROADS REPAIR	
DETAILS		MUNICIPAL UTILITIES DEPARTMENT CITY OF STOCKTON, CALIFORNIA			
Revision No.	Description	Date	By	Appr'd. By	
SCALE AS SHOWN		APPROVED BY:	1/29/24	SHEET NO.	
DESIGNED BY PJS		DATE		C6.0	
DRAWN BY MWK				P22002	
CHECKED BY PJS		DEPUTY MUO DIRECTOR		PROJECT NO.	
RECORD DWGS.		STOCKTON, CALIFORNIA			